

Electronic Timer - Series Micon® 225

- True OFF Delay (Power OFF Delay) up to 600 seconds with 2 C/O.



Ordering Information

Cat. No.	Description
23GDT0	24-240 VAC/DC, True OFF Delay (Power OFF Delay) Timer, 2 C/O

Electronic Timer - Series Micon® 225



Cat. No.	23GDT0	
Parameters		
Timer Description	True OFF Delay (Power OFF Delay) Timer	
Mode	True OFF Delay (Power OFF Delay)	
Functional Diagram		
Supply Voltage (φ)	24 - 240 VAC/DC	
Supply Variation	-10 to +20% (of φ)	
Frequency	50/60 Hz	
Power Consumption (Max.)	2.5 VA	
Energizing Time	1s (Minimum)	
Timing Range	0.6s to 600s	
Setting Accuracy	± 5% of Full scale	
Repeat Accuracy	± 1%	
Output	Relay Output	2 C/O
	Contact Rating	5A @ 240 VAC / 28 VDC (Resistive)
	Electrical Life	1x10 ⁵
	Mechanical Life	1x10 ⁷
Utilization Category	AC - 15	Rated Voltage (Ue): 120/240 V, Rated Current (Ie): 3.0/1.5 A
	DC - 13	Rated Voltage (Ue): 24/125/250 V, Rated Current (Ie): 2.0/0.22/0.1 A
Operating Temperature	-15°C to +60°C	
Storage Temperature	-20°C to +70°C	
Humidity (Non Condensing)	95% (Rh)	
LED Indication	Green LED → Power ON, Red LED → Relay ON	
Enclosure	Flame Retardant UL94-V0	
Dimension (W x H x D) (in mm)	22.5 X 75 X 100.5	
Weight (unpacked)	130 g	
Mounting	Base / DIN Rail	
Certification		
Degree of Protection	IP 20 for Terminals, IP 40 for Enclosure	

EMI / EMC

Harmonic Current Emissions	IEC 61000-3-2
ESD	IEC 61000-4-2
Radiated Susceptibility	IEC 61000-4-3
Electrical Fast Transients	IEC 61000-4-4
Surges	IEC 61000-4-5
Conducted Susceptibility	IEC 61000-4-6
Voltage Dips & Interruptions (AC)	IEC 61000-4-11
Voltage Dips & Interruptions (DC)	IEC 61000-4-29
Conducted Emission	CISPR 14-1
Radiated Emission	CISPR 14-1

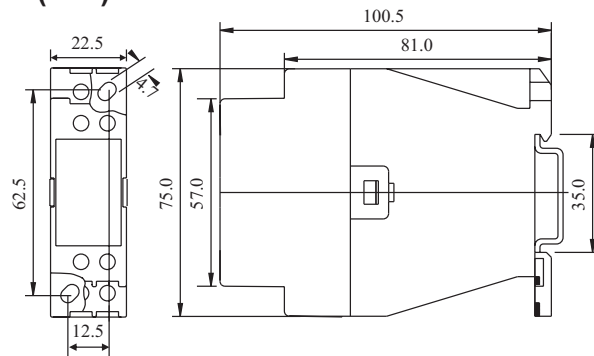
Environmental

Cold Heat	IEC 60068-2-1
Dry Heat	IEC 60068-2-2
Vibration	IEC 60068-2-6
Repetitive Shock	IEC 60068-2-27
Non-Repetitive Shock	IEC 60068-2-27

Electronic Timer - Series Micon® 225

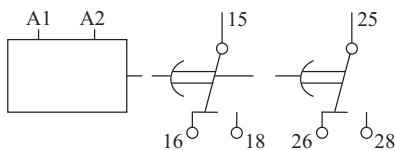


MOUNTING DIMENSION (mm)

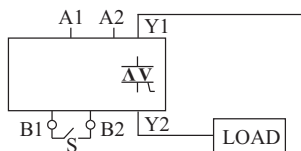


2A5DT5, 2B5DT5, 2AODT5, 2ASDT0, 2ASDT1, 2BSDT0, 2BSDT1, 2AADT5, 20JDTT, 20NDTT, 2ANDT0, 23GDT0, 2A6DT6, 2B6DT6

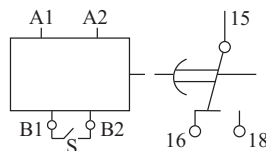
CONNECTION DIAGRAM



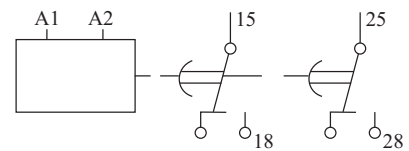
2A5DT5, 2B5DT5, 2AADT5, 23GDT0, 2AODT5



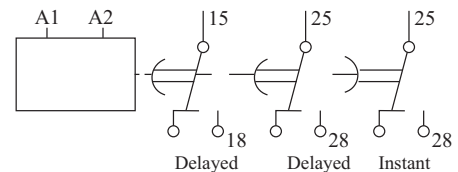
20JDTT, 20NDTT



2ANDT0

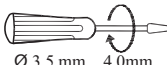



2ASDT0, 2BSDT0, 2ASDT1, 2BSDT1



2A6DT6, 2B6DT6

TERMINAL TORQUE & TERMINAL CAPACITY

 Ø 3.5 mm...4.0mm	0.60 N.m (6 Lb.in)
	1 x 4.0 mm ² Solid/Stranded Wire
AWG	1 x 20 to 10