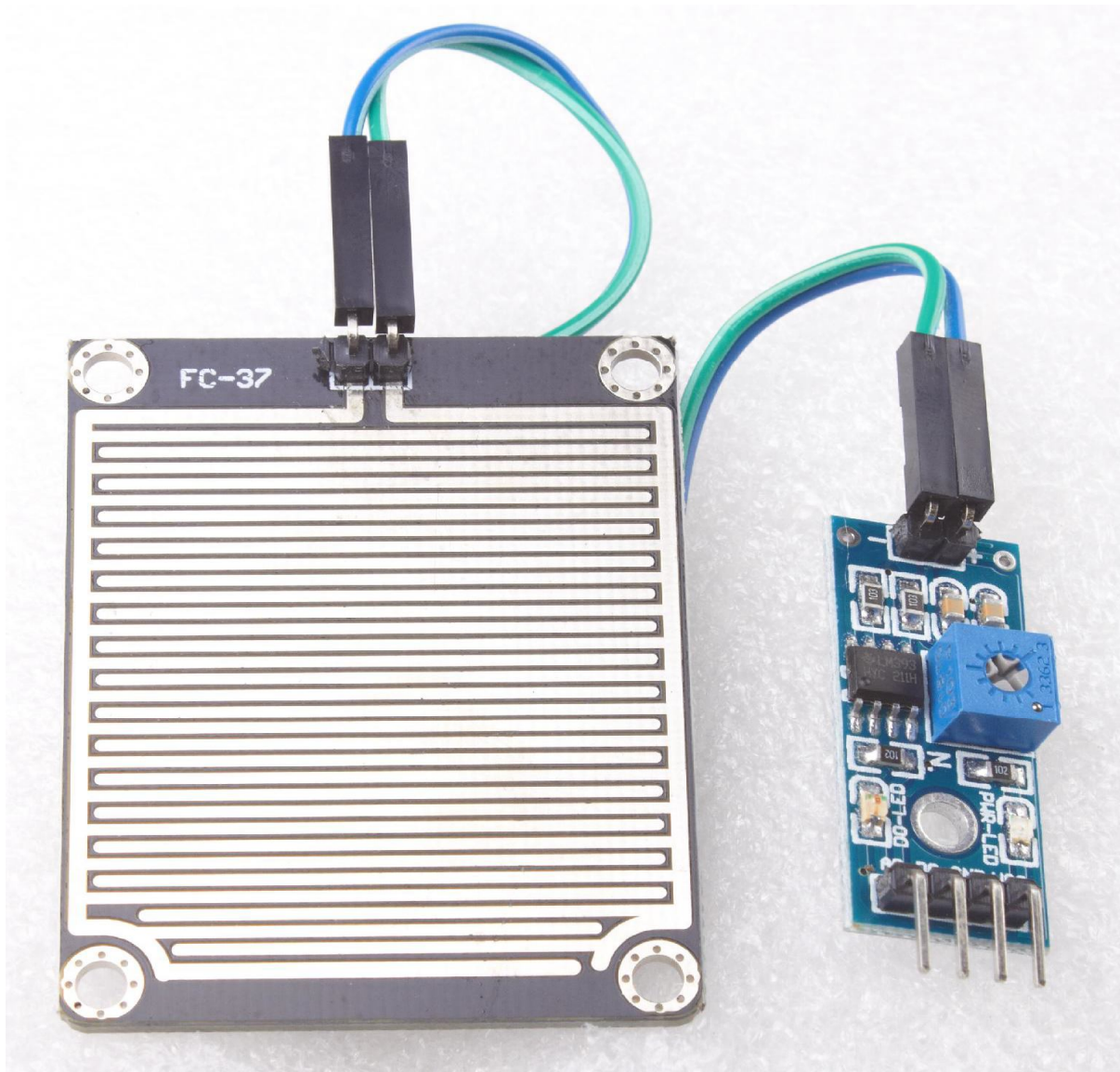


170689

Instruction Manual:



Product Usage:

Arduino robot kit, raindrop, rain sensor, can be used for monitoring various weather conditions and converted into a number of fixed signals and AO output.

Specification :

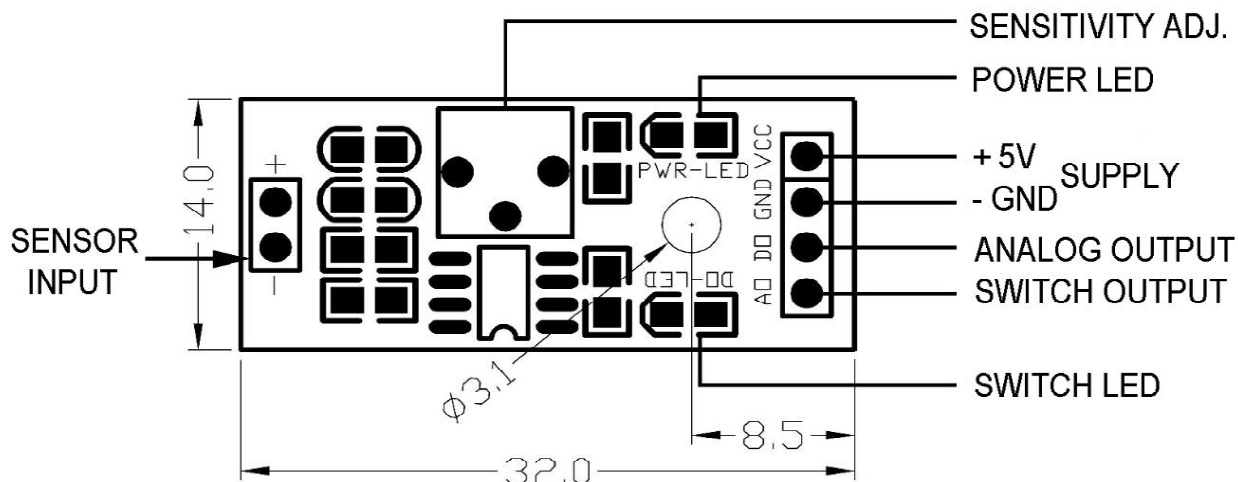
- 1 The sensor is made of high quality FR-04 double-sided material, with a large area of 5.0*4.0CM and nickel plating. The surface is treated to have superior performance against oxidation, electrical conductivity, and life;
- 2 the comparator output, the signal is clean, the waveform is good, the driving ability is strong, more than 15mA;
- 3 with potentiometer adjustment sensitivity;
- 4 working voltage 3.3V-5V
- 5 Output form: digital switch output (0 and 1) and analog AO voltage output;
- 6 with fixed bolt holes for easy installation
- 7 small board PCB size: 3.2cm x 1.4cm
- 8 using a wide voltage LM393 comparator

Specification :

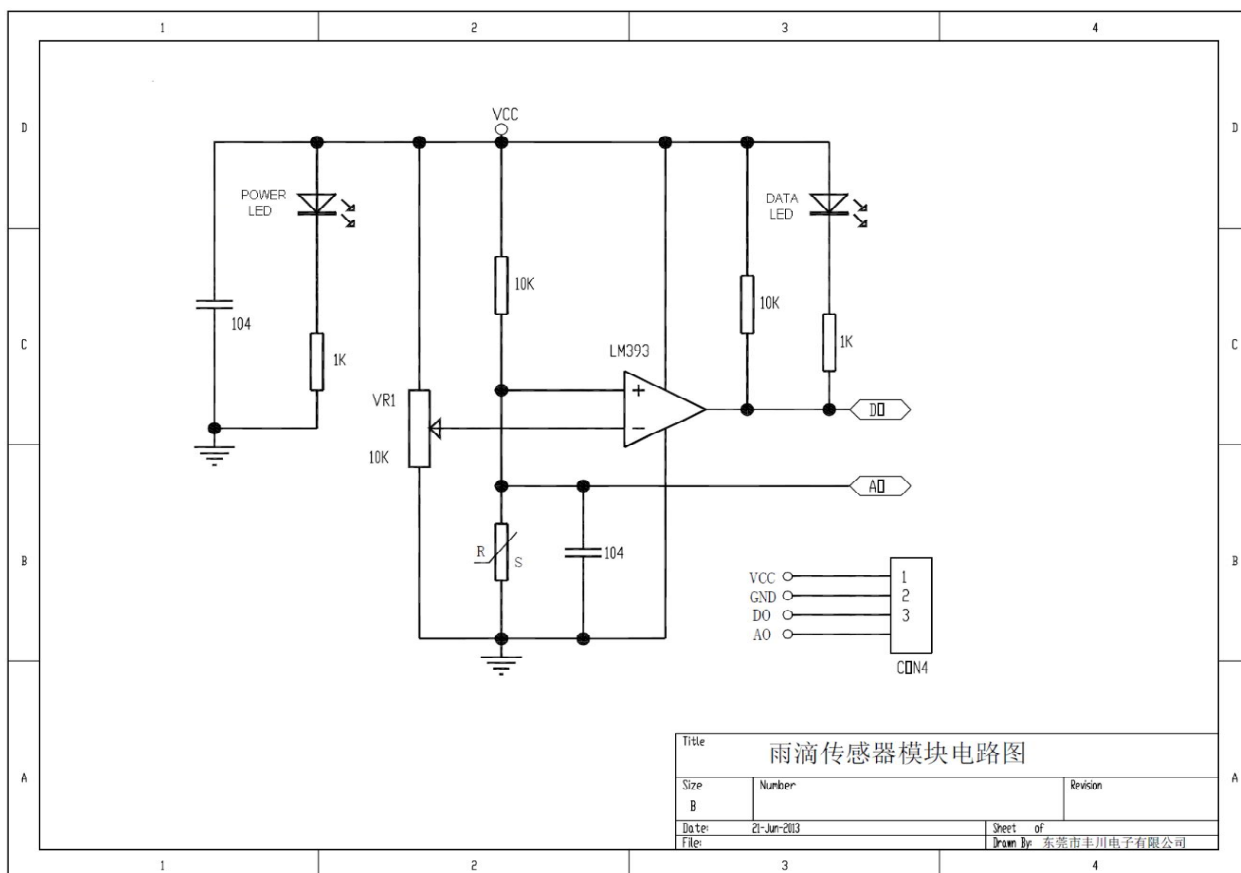
Connect the 5V power supply, the power indicator light is on, and the DO output is high when there is no water droplet on the sensor board. The switch indicator is off, a drop of water is dropped, the DO output is low, and the switch indicator is on. Brush the water droplets above and return to the high level state. . . .
The AO analog output can be connected to the AD port of the microcontroller to detect the amount of rain dripping on it.
The DO TTL digital output can also be connected to a microcontroller to detect rain.

Wiring:

- 1 VCC: Connect the positive pole of the power supply (3-5V)
- 2 GND: connected to the negative power supply
- 3 DO: TTL switch signal output
- 4 AO: analog signal output



- 1. VCC : power + (3-5V)
- 2. GND: power ground
- 3. DO : TTL output switch signal
- 4. AO : Analog output signal



Title		
雨滴传感器模块电路图		
Size	Number	Revision
B		
Date:	21-Jun-2013	Sheet of
File:		Drawn By: 东莞市丰川电子有限公司