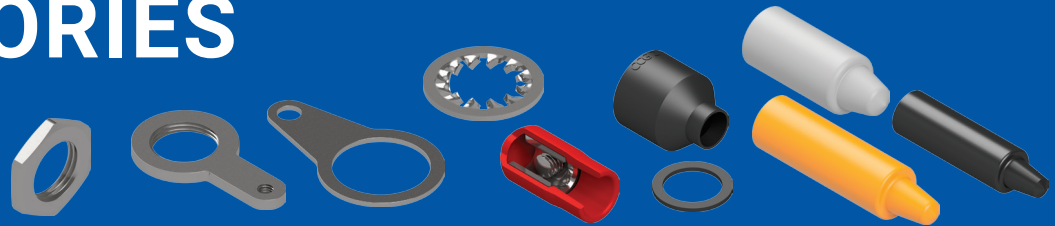
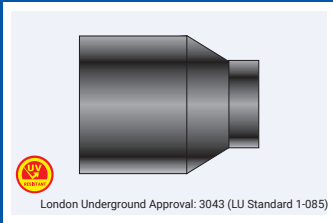


ACCESSORIES



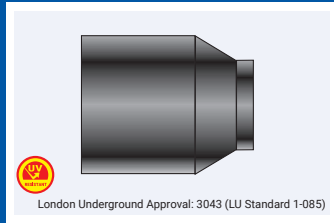
Neoprene Shroud Short



Product Code	Size Reference	Metric Size
1521-0	0	M20
152101	1	M20
152102	2	M25
152103	3	M32
152104	4	M40
152105	5	M50
152106	6	M63
152107	7	M75

All dimensions are in mm.

PVC Shroud Short

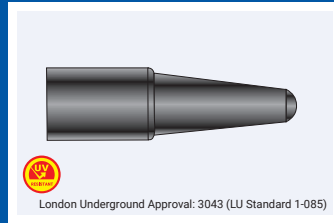


Product Code	Size Reference	Metric Size
1522-0	0	M20
152201	1	M20
152202	2	M25
152203	3	M32
152204	4	M40
152205	5	M50
152206	6	M63
152207	7	M75
152208	8	M80
152209	9	M90
152210	10	M100

All dimensions are in mm.

PVC Shroud Black Long

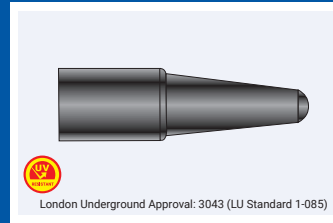
ORANGE AND BLUE AVAILABLE ON REQUEST



Product Code	Size Reference	Metric Size
1525-0	0	M20
152501	1	M20
152502	2	M25
152503	3	M32
152504	4	M40
152505	5	M50
152506	6	M63
152507	7	M75
152508	8	M80
152509	9	M90
152510	10	M100
152511	11	M110 / M115
152512	12	M120
152513	13	M130

All dimensions are in mm.

PVC-U Shroud Black Long

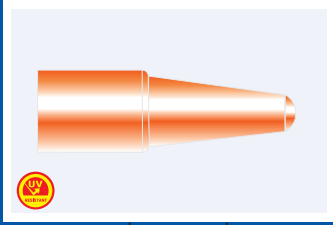


Product Code	Size Reference	Metric Size
1527-0	0	M20
152701	1	M20
152702	2	M25
152703	3	M32
152704	4	M40
152705	5	M50
152706	6	M63
152707	7	M75
152708	8	M80
152709	9	M90
152710	10	M100

All dimensions are in mm.

PVC-U Shroud Orange Long

London Underground Approval: 3043 (LU Standard 1-085)

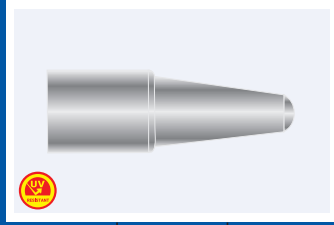


Product Code	Size Reference	Metric Size
1527-0-OR	0	M20
152701-OR	1	M20
152702-OR	2	M25
152703-OR	3	M32
152704-OR	4	M40
152705-OR	5	M50
152706-OR	6	M63
152707-OR	7	M75
152708-OR	8	M80
152709-OR	9	M90
152710-OR	10	M100

All dimensions are in mm.

LSOH Shroud Grey Long

London Underground Approval: 3043 (LU Standard 1-085)

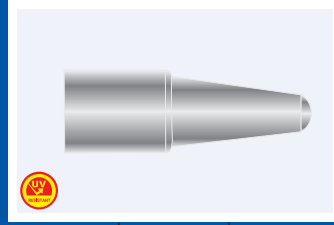


Product Code	Size Reference	Metric Size
1526-0	0	M20
152601	1	M20
152602	2	M25
152603	3	M32
152604	4	M40
152605	5	M50
152606	6	M63
152607	7	M75
152608	8	M80
152609	9	M90
152610	10	M100
152611	11	M110

All dimensions are in mm.

LSOH-U Shroud Grey Long

London Underground Approval: 3043 (LU Standard 1-085)

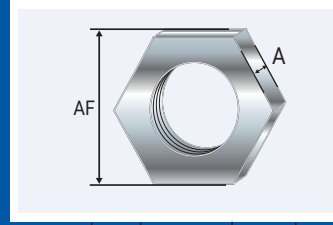


Product Code	Size Reference	Metric Size
1528-0	0	M20
152801	1	M20
152802	2	M25
152803	3	M32
152804	4	M40
152805	5	M50
152806	6	M63
152807	7	M75
152808	8	M80
152809	9	M90
152810	10	M100

All dimensions are in mm.

Brass Locknut (Nickel Plated)

STAINLESS STEEL ON AVAILABLE REQUEST

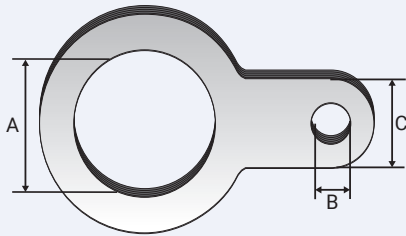


Product Code	Size Ref	Metric Size	Across Flats	Thickness (A)
300900	0	M20x1.5	25	5
300901	1	M20x1.5	25	5
300902	2	M25x1.5	32	5
300903	3	M32x1.5	42	5
300904	4	M40x1.5	52	5
300905	5	M50x1.5	65	6
300906	6	M63x1.5	80	6
300907	7	M75x1.5	90	7
300908	8	M80x2.0	96	8
300909	9	M90x2.0	110	8

All dimensions are in mm.

Slip-On Earth Tag

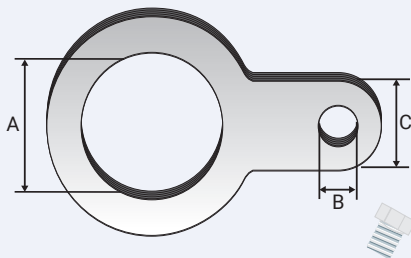
NICKEL PLATED BRASS OR STAINLESS STEEL



Product Code	Size Ref.	Dimension 'A'	Dimension 'B'	Dimension 'C'	Square Section	Short Circuit Fault Current Ratings BS6121 Part 5: 1993	
6220-1	0/1	M20	7mm	12mm x 1.5mm	18mm ²	20mm	3.06KA / 1 second
622902	2	M25	7mm	12mm x 1.5mm	18mm ²	25mm	4.00KA / 1 second
622903	3	M32	12mm	22mm x 1.5mm	33mm ²	32mm	5.40KA / 1 second
622904	4	M40	12mm	32mm x 1.5mm	48mm ²	40mm	7.20KA / 1 second
622905	5	M50	12mm	40mm x 1.5mm	60mm ²	50mm	10.40KA / 1 second
622906	6	M63	12mm	40mm x 1.5mm	60mm ²	63mm	10.40KA / 1 second
622907	7	M75	12mm	40mm x 1.5mm	60mm ²	75mm	10.40KA / 1 second
622908	8	M82	12mm	40mm x 1.5mm	60mm ²	-	-
622909	9	M90	12mm	40mm x 1.5mm	60mm ²	-	-

All dimensions are in mm.

Screw-On Earth Tag



Product Code	Size Ref.	Dimension 'A'	Dimension 'B'	Dimension 'C'	Square Section	Short Circuit Fault Current Ratings BS6121 Part 5: 1993	
6030-1	0/1	M6	M6	10mm x 3mm	30mm ²	20mm	26KA / 1 second
603202	2	M25	M6	10mm x 4mm	40mm ²	25mm	26KA / 1 second
603203	3	M32	M6	12mm x 6mm	70mm ²	32mm	26KA / 1 second
603204	4	M40	M8	20mm x 6mm	120mm ²	40mm	26KA / 1 second
603205	5	M50	M10	24mm x 8mm	185mm ²	50mm	43KA / 1 second
603206	6	M63	M12	40mm x 8mm	300mm ²	63mm	43KA / 1 second
603207	7	M75	M12	40mm x 8mm	300mm ²	75mm	43KA / 1 second
603208	8	M82	M12	40mm x 8mm	300mm ²	-	-
603209	9	M90	M12	40mm x 8mm	300mm ²	-	-

All dimensions are in mm.

Sealing Gasket Metric

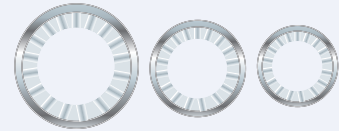


Product Code	Metric Size	Thickness 'A'
805520	M20	2.0
805525	M25	2.0
805532	M32	2.0
805540	M40	2.0
805550	M50	2.0
805563	M63	2.0
805575	M75	2.0
805580	M80	2.0
805590	M90	2.0

All dimensions are in mm.

Serrated Washer

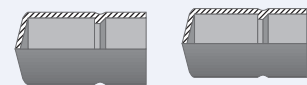
STAINLESS STEEL



Product Code	Metric Size
805620	M20
805625	M25
805632	M32
805640	M40
805650	M50
805663	M63
805675	M75
805680	M80
805690	M90

All dimensions are in mm.

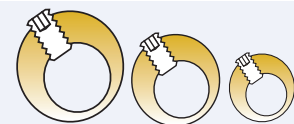
Insulation Sleeve



Product Code	Size Reference
550502	2

All dimensions are in mm.

Terminal Connector



Product Code	Size Ref.	Hole Diameter	Allen Key No.
580302	2	10mm	4mm

All dimensions are in mm.