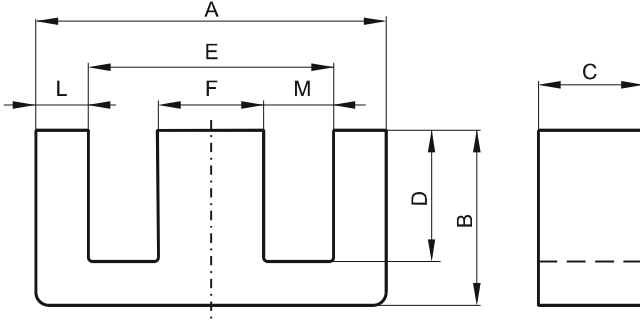


**DIMENSIONS**



(mm)	Nominal:	Tol. min.:	Tol. max.:
<b>A</b>	100.3	-2.0	+ 2.0
<b>B</b>	59.4	-0.47	+ 0.47
<b>C</b>	27.5	-0.5	+ 0.5
<b>D</b>	46.85	-0.38	+ 0.38
<b>E</b>	72.0 Min.		
<b>F</b>	27.5	-0.5	+ 0.5
<b>L</b>	13.75	-0.38	+ 0.38
<b>M</b>	22.65	-0.5	+ 0.5
Eff. Parameters			
<b>Ae mm<sup>2</sup></b>	<b>Amin mm<sup>2</sup></b>	<b>le mm</b>	<b>Ve mm<sup>3</sup></b>
738.0	692.0	274.0	202000

**INDUCTANCE**

AL value (nH/T <sup>2</sup> )	Test conditions
9010 ± 25%	10 kHz, < 0.5 mT, 25 °C

**MARKING**

0T49928EC  
PXXXXXXXXX

**CORE LOSSES**

P <sub>i</sub> max	Test conditions
< 145.44 W/set (< 720 mW/cm <sup>3</sup> )	100 kHz, 200 mT, 25 °C
< 137.4 W/set (< 680 mW/cm <sup>3</sup> )	100 kHz, 200 mT, 100 °C

**NOTE**

Spec. modifications	Previous	Revised
2013-03-29		Issued
2013-07-22	Marking: 0T49928EC PXXXXX	Marking: 0T49928EC PXXXXXXXXX