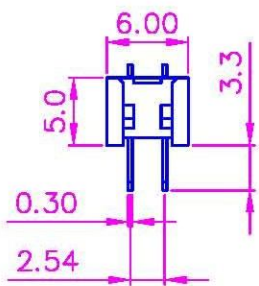
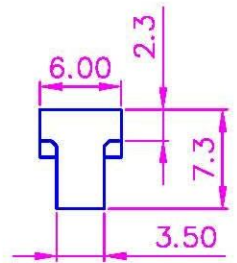
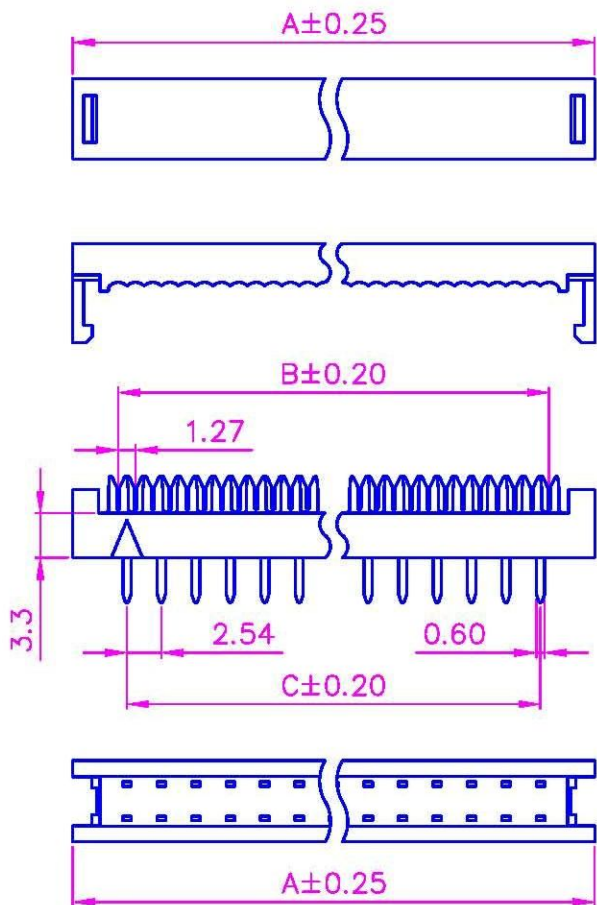


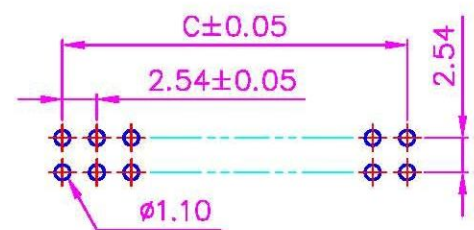
Material:  
 Insulator: PBT+30% Glass Fiber (UL94V-0).  
 Contact: Copper Alloy.  
 Contact Plated: Gold or Tin over Nickel Plated.

Specification:  
 Current Rating: 1 Amp.  
 Withstanding Voltage: AC 500V for 1 Minute.  
 Insulation Resistance: 1000MΩ Min. at DC 500V.  
 Contact Resistance: 15mΩ Max..  
 Operating Temperature: -40°C ~ +105°C.

REV.	ECN NO.	DATE
C	03021075	03/03/11
D	03031229	03/04/02
E	03031246	03/04/04



Pos.	Dim. A	Dim. B	Dim. C
6	13.07	6.35	5.08
8	15.61	8.89	7.62
10	18.15	11.43	10.16
12	20.69	13.97	12.70
14	23.23	16.51	15.24
16	25.77	19.05	17.78
18	28.31	21.59	20.32
20	30.85	24.13	22.86
24	35.93	29.21	27.94
26	38.47	31.75	30.48
30	43.55	36.83	35.56
34	48.63	41.91	40.64
36	51.17	44.45	43.18
40	56.25	49.53	48.26
50	68.95	62.23	60.96
60	81.65	74.93	73.66
64	86.73	80.01	78.74



RECOMMEND P.C. BOARD LAYOUT

△ △ 三角點中之圖型為模具辨識無其他功能

DRN.	SIGNATURE	DATE	TITLE:		CODE NO.	JW00	TOLERANCE: x. .x ±0.2 .xx ±0.10 ANG.	YQFxxA
	CHK.	Linda	03/04/04	2.54mm Transition IDC Connector		CUS. NO.		
APP.	David	03/04/04	J&W P/N:	DIP Series	UNIT	mm	DRAWING NO.	
			CUS. P/N:		PAGE	1/1	DIP001	