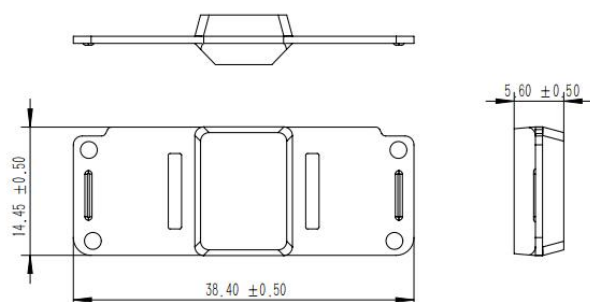
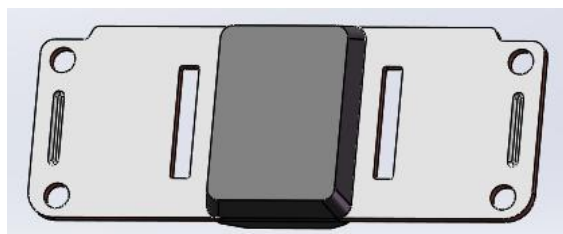




## XT4550M-B接线盒模块 Integrated Diode



### FEATURES

- Low forward voltage drop
- Low leakage current
- Super-long operating life
- High forward surge capability
- Easy installation
- Terminals: Copper (tin-plated)
- ESD  $\geq 20\text{kV}$
- Plastic packaging: UL 94 Flammability Classification V-0

### Maximum Rating (per diode, at $T_A = 25^\circ\text{C}$ unless otherwise specified)

	SYMBOL	VALUE	UNITS
<b>Minimum Reverse Voltage, Repetitive</b> $T_j 25^\circ\text{C}$ $I_r < 0.5\text{mA}$	$V_{RRM}$	45	V
<b>Maximum DC Blocking Voltage</b> $T_j 25^\circ\text{C}$ $I_r < 0.5\text{mA}$	$V_{DC}$	45	V
<b>Maximum Average Forward Current</b> $T_j 150^\circ\text{C}$	$I_{FAV}$	45	A
<b>Peak Forward Surge Current</b> 8.3ms single half-wave superimposed on rated load (JEDEC method)	$I_{FSM}$ (surge)	400	A
<b>Maximum Instantaneous Forward Voltage</b>	$V_F, T_j = 25^\circ\text{C}$	0.50	V
	$V_F, T_j = 150^\circ\text{C}$	0.30	V
<b>Maximum Reverse Current at DC Blocking Voltage</b>	$I_R, T_A = 25^\circ\text{C}$	0.1	mA
	$I_R, T_A = 100^\circ\text{C}$	50	mA
<b>Operating Junction Temperature in DC Forward Mode</b>	$T_j, t \leq 1\text{h}$	200	$^\circ\text{C}$
<b>Thermal Resistance to Case</b>	$R_{\theta jc}$	0.8	$^\circ\text{C/W}$
<b>Storage Temperature Range</b>	$T_{STG}$	-55 ~ +150	$^\circ\text{C}$



XT4550M-B印字要求:

