

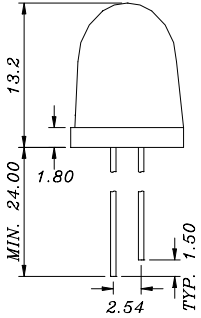
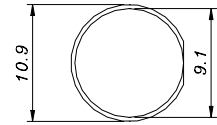


SHARLIGHT ELECTRONICS CO., LTD.

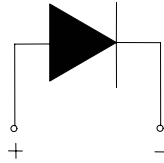
SPECIFICATION FOR APPROVAL

Part No. : SLR-10DNW40-A0100-LL

Package Dimensions



□ 0.5 SQUARE*2



- Notes: 1. All dimensions are in millimeters (inches).
 2. Tolerance is $\pm 0.25\text{mm}(.010")$ unless otherwise noted.
 3. Protruded resin under flange is 1.0mm(.04") max.
 4. Lead spacing is measured where the leads emerge from the package.
 5. Specifications are subject to change without notice.

Absolute Maximum Ratings at TA=25°C

Parameter	Maximum Rating	Unit
Power Dissipation	80	mW
Peak Forward Current (1/10 Duty Cycle, 0.1ms Pulse Width)	100	mA
Continuous Forward Current	20	mA
Operating Temperature Range	-20°C to +80°C	
Storage Temperature Range	-30°C to +100°C	
Lead Soldering Temperature [1.6mm(.063") From Body]	260°C for 5 Seconds	

Electrical / Optical Characteristics at TA=25°C

Parameter	Symbol	Min.	Typ.	Max.	Unit	Test Condition
Luminous Intensity	I_V	40000	90000		mcd	IF = 20mA
Viewing Angle	$2\theta_{1/2}$		10		deg	IF = 20mA
Forward Voltage	V_F		3.5	4.0	V	IF = 20mA
Reverse Current	IR			50	μA	VR = 5V

*The best current for long last : 16mA

TYPICAL ELECTRON-OPTICAL CHARACTERISTIC CURVES

25°C Free Air Temperature Unless Otherwise Specified

