



MANTECH ELECTRONICS

TEL JHB : (011) 493-9307
CAPE : (021) 535-3150
KZN : (031) 309-7686

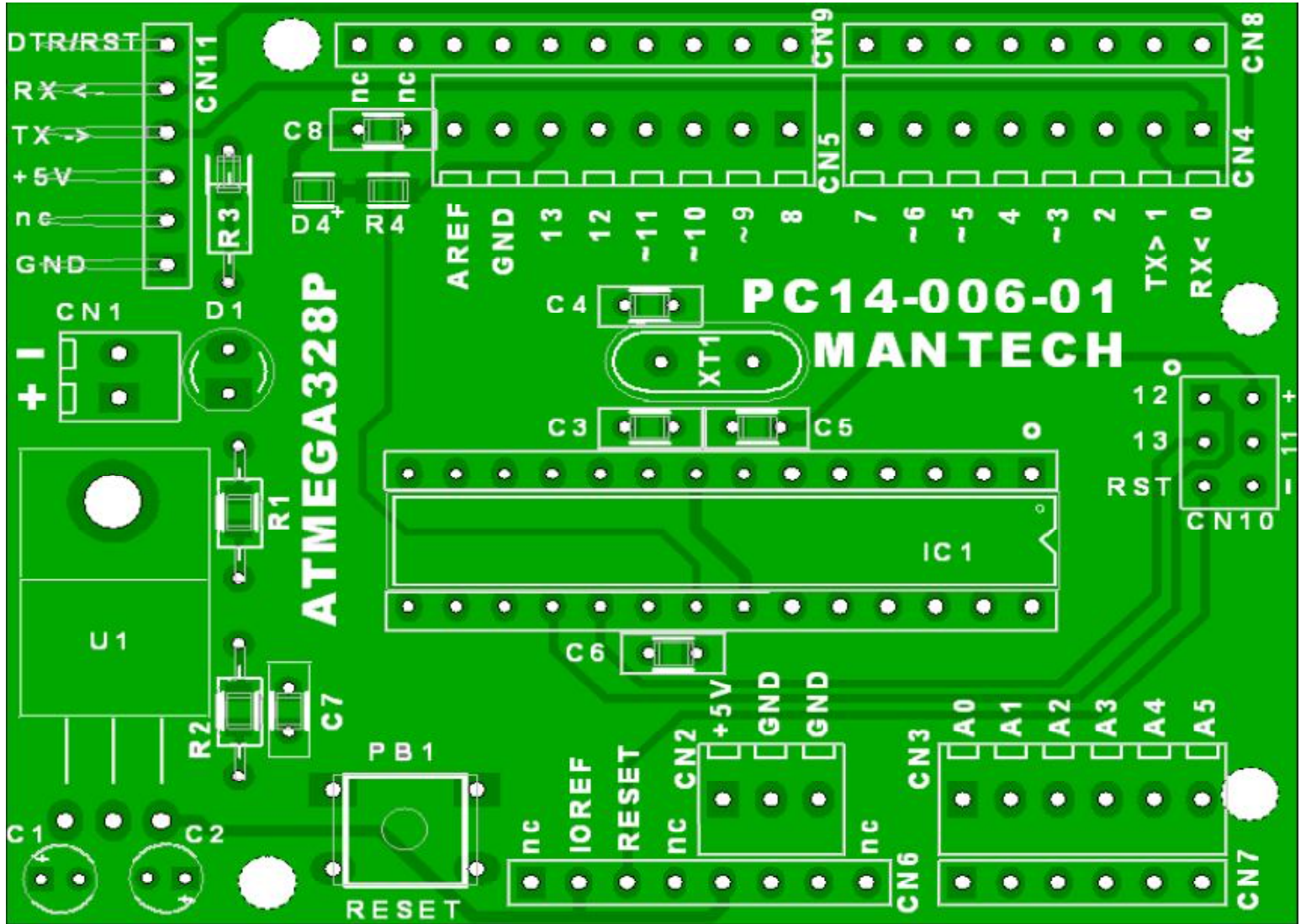
FAX : (011) 493-9319

sales@mantech.co.za

www.mantech.co.za

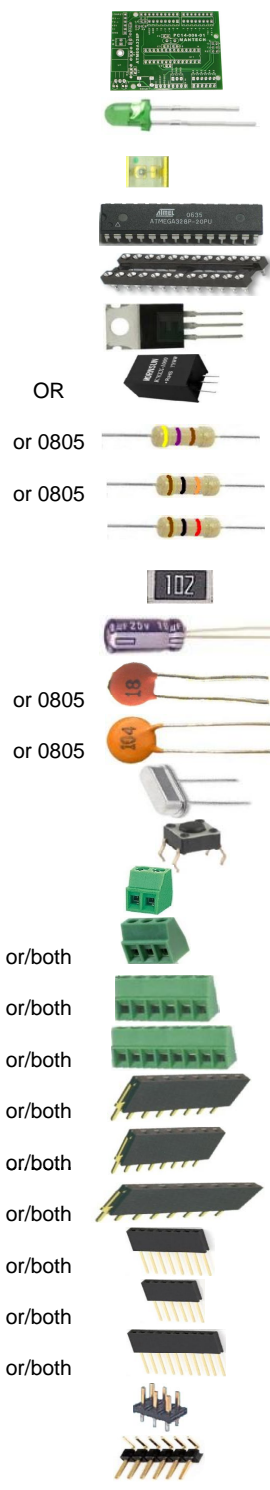
International Components Distributor
A MOBICON COMPANY

PCB LAYOUT FOR POPULATING PC14-006-01



PCB Component side

BOM



QTY	CCT N°	STOCK CODE	DESCRIPTION	PART NAME
1	PCB	14M0163	PCB PC14-006-01	PC14-006-01
1	D1	14M6016	LED 5mm DI-GR RND L/C 4m	BL-B2134-L
1	D4	35M2858	LED SMD 0805 CL-GR 8mcd 120D	BL-HG035A-TR
1	IC1	14M2991	MICRO DIP ATMEGA328P PROGRAMED	ATMEGA328P
1	IC1a	70M0096	SOCK DIL 0.3 TULIP RND NAR P28	ISM28T1(03) SKINNY
1	U1	35M2889	REG POS TO220 5V 1A MC7805CTG	MC7805CTG
OR	OR	U1	REG SMPS I=6.5-18V O=5V 1.5A	K7805-1500
or 0805	1	R1	RES 1/4W RND C/F 5% 470E	CF25-470E-J T/B
or 0805	1	R2	RES 1/4W RND C/F 5% 10K	CF25-10K-J
	1	R3	RES 1/4W RND C/F 5% 1K	CF25-1K-J
	1	R4	RES SMD 0805 5% 1K0	RC0805JR-07
	2	C1-2	CAP ELEC RAD 10uF 25V SSHT	E.CAP 10uF 25V SS
or 0805	2	C3-4	CAP CER DISK NPO 18pF 50V 2.5	CC1-F5NPO2A180KSPW
or 0805	4	C5-8	CAP CER DISK Y5V 100nF 63V 2.5	CS1H7Y5V1B104MSPW
	1	XL1	CRYSTAL HC-49S 16.0MHz L/P	HC49S-16M1630F
	1	PB1	SWITCH TACTILE 6x6 H=5.0	MTS-1102A
	1	CN1	TERM N/C PCB 2W 2.54 STR GRN	DG308-2.54-02P-14
or/both	1	CN2	TERM N/C PCB 3W 2.54 STR GRN	DG308-2.54-03P-14
or/both	1	CN3	TERM N/C PCB 6W 2.54 STR GRN	DG308-2.54-06P-14
or/both	2	CN4,5	TERM N/C PCB 8W 2.54 STR GRN	DG308-2.54-08P-14
or/both	2	CN6,8.	SOCK SIL STR HOUSED 2.54 8W	FHSS08G1
or/both	1	CN7	SOCK SIL STR HOUSED 2.54 6W	FHSS06G1
or/both	1	CN9.	SOCK SIL STR HOUSED 2.54 10W	FHSS10G1
or/both	2	CN6,8.	SOCK SIL PCB 2.54 STR 08W L13	YTS1N08X (14.70)
or/both	1	CN7	SOCK SIL PCB 2.54 STR 06W L13	YTS1N06X (14.70)
or/both	1	CN9.	SOCK SIL PCB 2.54 STR 08W L13	YTS1N08X (14.70)
	1	CN10	HEADER DIL 06W PCB STR TH=11.5	YWN06
	1	CN11	HEADER SIL R/A PART OF 14M7421	YVR40

