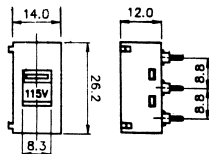


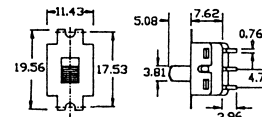
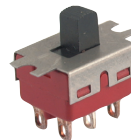
# Slide Switches



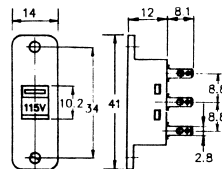
**B14051**  
POWER SELECT SWITCH  
125V 10A (250V 5A)



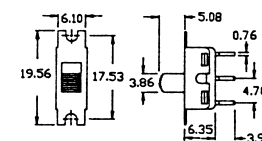
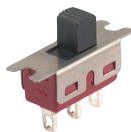
**B1406**  
SLIDE SWITCH  
(DPDT) ON-ON  
120V 6A (250V 2A)



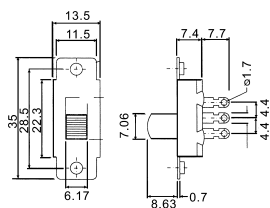
**B14053**  
POWER SELECT SWITCH  
125V 10A (250V 5A)



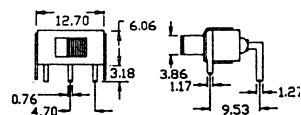
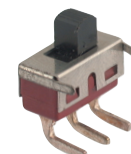
**B1407**  
SLIDE SWITCH  
(SPDT) ON-ON  
120V 6A (250V 2A)



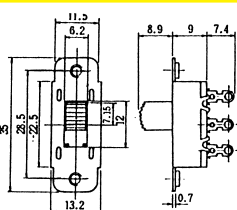
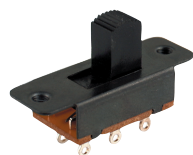
**B14054**  
SLIDE SWITCH  
(SPDT) ON-ON  
125V 10A (250V 5A)



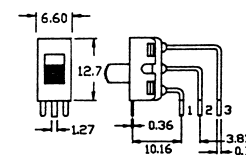
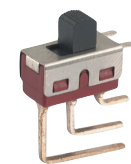
**B1408**  
SLIDE SWITCH  
(SPDT) ON-ON  
120V 6A (250V 2A)



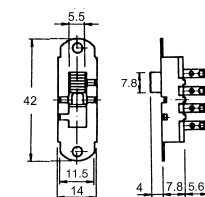
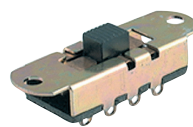
**B14055**  
SLIDE SWITCH  
(DPDT) ON-ON  
120V 6A (250V 5A)



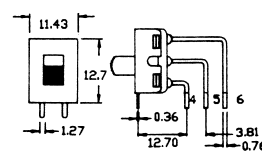
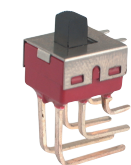
**B1409**  
SLIDE SWITCH  
(SPDT) ON-ON  
120V 6A (250V 2A)



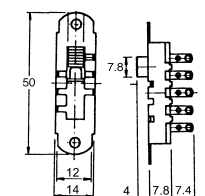
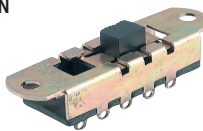
**B14056**  
SLIDE SWITCH  
(DP3T) ON-ON-ON  
125V 5A



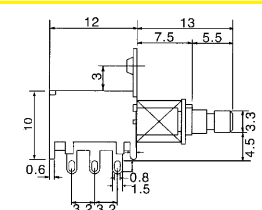
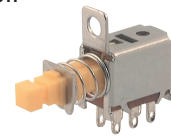
**B14091**  
SLIDE SWITCH  
(DPDT) ON-ON  
120V 6A (250V 2A)



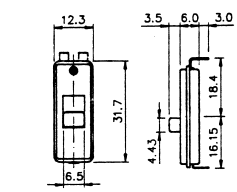
**B14057**  
SLIDE SWITCH  
(DP4T) ON-ON-ON-ON  
125V 5A



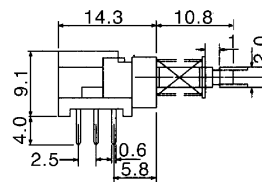
**B14096**  
6P PUSH SWITCH  
(DPDT) ON-ON  
DC 30V 0.3A



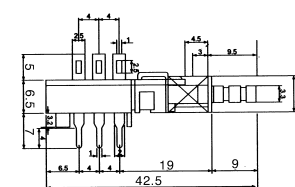
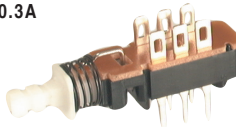
**B14058**  
SLIDE SWITCH  
(SPDT) OFF-ON-ON  
125V 7A



**B14097**  
6P PUSH SWITCH  
(DPDT) ON-ON  
DC 30V 0.3A



**B14098**  
6P PUSH SWITCH  
(DPDT) ON-ON  
DC 30V 0.3A



**B14099**  
18P PUSH SWITCH  
(6P2T) ON-ON  
DC 30V 0.3A

