

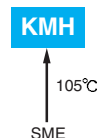
Return Group Chart



LARGE CAPACITANCE ALUMINUM ELECTROLYTIC CAPACITORS Standard screw terminals, 105°C

KMH Series

- Endurance with ripple current : 2,000 hours at 105°C
- RoHS2 Compliant

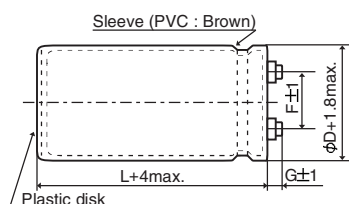


◆ SPECIFICATIONS

Items	Characteristics
Category	-40 to +105°C (10 to 100V _{dc}) -25 to +105°C (160 to 400V _{dc})
Temperature Range	
Rated Voltage Range	10 to 400V _{dc}
Capacitance Tolerance	±20% (M) (at 20°C, 120Hz)
Leakage Current	I=0.02CV or 5mA, whichever is smaller. Where, I : Max. leakage current (μA), C : Nominal capacitance (μF), V : Rated voltage (V) (at 20°C after 5 minutes)
Dissipation Factor (tan δ)	Shall not exceed the values shown in the STANDARD RATINGS (at 20°C, 120Hz)
Low Temperature Characteristics	Capacitance change 10 to 100V _{dc} : C(-40°C)/C(+20°C) ≥ 0.6 160 to 400V _{dc} : C(-25°C)/C(+20°C) ≥ 0.7 (at 120Hz)
Insulation Resistance	When measured between the terminals that are connected to each other and to the mounting clamp on the insulating sleeve covering the case by using an insulation resistance meter of 500V _{dc} , the insulation resistance shall not be less than 100MΩ.
Insulation Withstanding Voltage	When a voltage of 2,000V _{dc} is applied for 1 minute between the terminals that are connected to each other and to the mounting clamp on the insulating sleeve covering the case, there shall not be electrical damage.
Endurance	The following specifications shall be satisfied when the capacitors are restored to 20°C after subjected to DC voltage with the rated ripple current is applied (the peak voltage shall not exceed the rated voltage) for 2,000 hours at 105°C.
	Capacitance change ≤ ±20% of the initial value
	D.F. (tan δ) ≤ 200% of the initial specified value
	Leakage current ≤ The initial specified value
Shelf Life	The following specifications shall be satisfied when the capacitors are restored to 20°C after exposing them for 500 hours at 105°C without voltage applied. Before the measurement, the capacitor shall be preconditioned by applying voltage according to Item 4.1 of JIS C 5101-4.
	Capacitance change ≤ ±20% of the initial value
	D.F. (tan δ) ≤ 200% of the initial specified value
	Leakage current ≤ The initial specified value

◆ DIMENSIONS (Screw-Mount) [mm]

- Terminal Code : LG



- φ35 to φ63.5 : G=6
- φ76.2 & φ89 : G=5

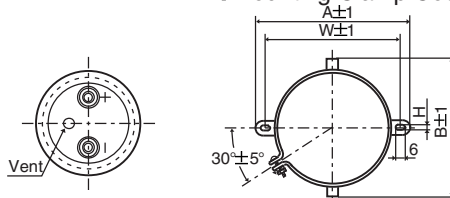
<Screw specifications>

Plus hexagon-headed screw : M5×0.8×10

Maximum screw tightening torque : 3.23Nm

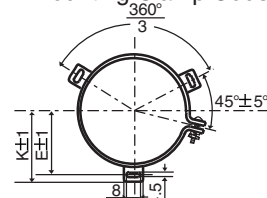
* The screw and the mounting clamp are separately supplied and not attached to the product.

- Mounting Clamp Code : B



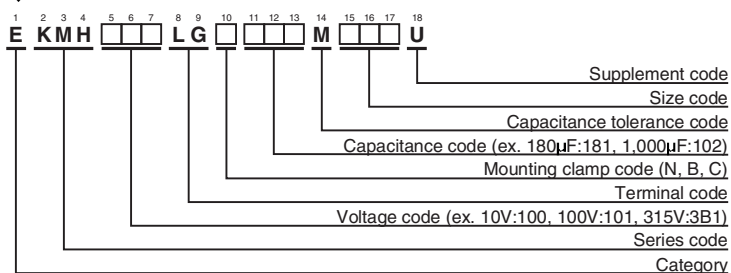
φD	A	B	W	H	F
35	58.0	44.0	48.0	3.5	12.7
50	78.0	64.0	68.0	4.5	22.4
63.5	90.0	76.0	80.0	4.5	28.0
76.2	104.5	90.0	93.5	4.5	31.5

- Mounting Clamp Code : C



φD	E	K	J	F
50	32.5	37.0	14.0	22.4
63.5	38.1	43.5	14.0	28.0
76.2	44.5	50.0	14.0	31.5
89	50.8	56.5	16.0	31.5

◆ PART NUMBERING SYSTEM



Please refer to "Product code guide (screw-mount terminal type)"

Return Group Chart



LARGE CAPACITANCE ALUMINUM ELECTROLYTIC CAPACITORS Standard screw terminals, 105°C

KMHSeries

◆STANDARD RATINGS

VV (V _{dc})	Cap (μF)	Case size φD×L(mm)	tan δ	Rated ripple current (Arms/105°C, 120Hz)	Part No.
10	27,000	35 × 50	0.45	4.90	EKMH100LGB273MA50U
	33,000	35 × 50	0.50	5.10	EKMH100LGB333MA50U
	39,000	35 × 60	0.50	5.90	EKMH100LGB393MA60U
	47,000	35 × 80	0.50	7.10	EKMH100LGB473MA80U
	56,000	35 × 80	0.60	7.10	EKMH100LGB563MA80U
	68,000	35 × 100	0.60	8.50	EKMH100LGB683MAA0U
	82,000	35 × 100	0.65	8.90	EKMH100LGB823MAA0U
	100,000	35 × 120	0.65	10.7	EKMH100LGB104MAC0U
	120,000	50 × 80	0.75	11.0	EKMH100LGC124MC80U
	150,000	50 × 100	0.80	13.2	EKMH100LGC154MCA0U
	180,000	50 × 120	0.80	15.7	EKMH100LGC184MCC0U
	220,000	50 × 120	0.85	16.8	EKMH100LGC224MCC0U
	270,000	63.5 × 120	1.00	19.6	EKMH100LGC274MDC0U
	330,000	63.5 × 120	1.20	19.7	EKMH100LGC334MDC0U
	390,000	76.2 × 120	1.50	21.3	EKMH100LGC394MEC0U
	470,000	76.2 × 120	1.80	21.4	EKMH100LGC474MEC0U
	560,000	76.2 × 140	2.00	23.6	EKMH100LGC564MEE0U
	680,000	89 × 140	2.40	26.0	EKMH100LGC684MFE0U
16	18,000	35 × 50	0.40	4.20	EKMH160LGB183MA50U
	22,000	35 × 50	0.40	4.70	EKMH160LGB223MA50U
	27,000	35 × 60	0.40	5.50	EKMH160LGB273MA60U
	33,000	35 × 60	0.45	5.70	EKMH160LGB333MA60U
	39,000	35 × 80	0.45	6.80	EKMH160LGB393MA80U
	47,000	35 × 80	0.50	7.10	EKMH160LGB473MA80U
	56,000	35 × 100	0.50	8.40	EKMH160LGB563MAA0U
	68,000	35 × 100	0.55	8.80	EKMH160LGB683MAA0U
	82,000	50 × 80	0.55	10.7	EKMH160LGC823MC80U
	100,000	50 × 80	0.65	10.8	EKMH160LGC104MC80U
	120,000	50 × 100	0.65	13.1	EKMH160LGC124MCA0U
	150,000	50 × 120	0.70	15.3	EKMH160LGC154MCC0U
	180,000	50 × 120	0.80	15.7	EKMH160LGC184MCC0U
	220,000	63.5 × 120	0.85	19.2	EKMH160LGC224MDC0U
	270,000	63.5 × 120	1.00	19.6	EKMH160LGC274MDC0U
	330,000	76.2 × 120	1.30	21.1	EKMH160LGC334MEC0U
	390,000	76.2 × 120	1.50	21.3	EKMH160LGC394MEC0U
	470,000	76.2 × 140	1.60	24.2	EKMH160LGC474MEE0U
560,000	89 × 140	2.00	28.1	EKMH160LGC564MFE0U	
680,000	89 × 140	2.40	28.5	EKMH160LGC684MFE0U	
25	12,000	35 × 50	0.35	3.70	EKMH250LGB123MA50U
	15,000	35 × 50	0.35	4.10	EKMH250LGB153MA50U
	18,000	35 × 60	0.35	4.80	EKMH250LGB183MA60U
	22,000	35 × 60	0.35	5.30	EKMH250LGB223MA60U
	27,000	35 × 80	0.35	6.40	EKMH250LGB273MA80U
	33,000	35 × 80	0.40	6.70	EKMH250LGB333MA80U
	39,000	35 × 100	0.40	7.80	EKMH250LGB393MAA0U
	47,000	35 × 120	0.40	9.30	EKMH250LGB473MAC0U
	56,000	50 × 80	0.45	9.70	EKMH250LGC563MC80U
	68,000	50 × 100	0.45	11.2	EKMH250LGC683MCA0U
	82,000	50 × 100	0.50	11.2	EKMH250LGC823MCA0U
	100,000	50 × 120	0.50	14.8	EKMH250LGC104MCC0U
	120,000	63.5 × 100	0.65	14.9	EKMH250LGC124MDA0U
	150,000	63.5 × 120	0.65	17.9	EKMH250LGC154MDC0U
	180,000	63.5 × 120	0.80	17.9	EKMH250LGC184MDC0U
	220,000	76.2 × 120	0.85	21.3	EKMH250LGC224MEC0U
	270,000	76.2 × 120	1.00	21.7	EKMH250LGC274MEE0U
	330,000	76.2 × 140	1.20	23.4	EKMH250LGC334MEE0U
390,000	89 × 140	1.50	24.9	EKMH250LGC394MFE0U	
35	8,200	35 × 50	0.30	3.30	EKMH350LGB822MA50U
	10,000	35 × 50	0.30	3.60	EKMH350LGB103MA50U
	12,000	35 × 60	0.30	4.20	EKMH350LGB123MA60U
	15,000	35 × 60	0.30	4.70	EKMH350LGB153MA60U
	18,000	35 × 80	0.30	5.70	EKMH350LGB183MA80U
	22,000	35 × 80	0.30	6.30	EKMH350LGB223MA80U
	27,000	35 × 100	0.30	7.50	EKMH350LGB273MAA0U
	33,000	35 × 120	0.30	9.00	EKMH350LGB333MAC0U
	39,000	50 × 80	0.35	9.20	EKMH350LGC393MC80U
	47,000	50 × 100	0.35	11.2	EKMH350LGC473MCA0U

VV (V _{dc})	Cap (μF)	Case size φD×L(mm)	tan δ	Rated ripple current (Arms/105°C, 120Hz)	Part No.
35	56,000	50 × 100	0.40	11.4	EKMH350LGC563MCA0U
	68,000	50 × 120	0.40	13.6	EKMH350LGC683MCC0U
	82,000	63.5 × 100	0.45	14.8	EKMH350LGC823MDA0U
	100,000	63.5 × 120	0.45	17.6	EKMH350LGC104MDC0U
	120,000	63.5 × 120	0.55	17.6	EKMH350LGC124MDC0U
	150,000	76.2 × 120	0.65	19.8	EKMH350LGC154MEC0U
	180,000	76.2 × 120	0.80	19.8	EKMH350LGC184MEC0U
	220,000	76.2 × 140	0.80	23.4	EKMH350LGC224MEE0U
	270,000	89 × 140	1.00	25.5	EKMH350LGC274MFE0U
	50	3,900	35 × 50	0.20	2.80
4,700		35 × 50	0.20	3.10	EKMH500LGB472MA50U
5,600		35 × 50	0.20	3.30	EKMH500LGB562MA50U
6,800		35 × 50	0.25	3.30	EKMH500LGB682MA50U
8,200		35 × 60	0.25	3.80	EKMH500LGB822MA60U
10,000		35 × 80	0.25	4.60	EKMH500LGB103MA80U
12,000		35 × 80	0.25	5.10	EKMH500LGB123MA80U
15,000		35 × 80	0.25	5.70	EKMH500LGB153MA80U
18,000		35 × 100	0.25	6.70	EKMH500LGB183MAA0U
22,000		35 × 120	0.25	8.10	EKMH500LGB223MAC0U
27,000		50 × 80	0.25	9.10	EKMH500LGC273MC80U
33,000		50 × 100	0.25	11.1	EKMH500LGC333MCA0U
39,000		50 × 120	0.25	13.1	EKMH500LGC393MCC0U
47,000		50 × 120	0.30	13.9	EKMH500LGC473MCC0U
56,000		63.5 × 100	0.35	13.9	EKMH500LGC563MDA0U
68,000		63.5 × 120	0.35	16.6	EKMH500LGC683MDC0U
82,000		76.2 × 120	0.40	18.9	EKMH500LGC823MEC0U
100,000		76.2 × 120	0.45	19.5	EKMH500LGC104MEC0U
120,000	76.2 × 120	0.55	19.5	EKMH500LGC124MEC0U	
150,000	89 × 140	0.60	23.9	EKMH500LGC154MFE0U	
180,000	89 × 140	0.75	23.9	EKMH500LGC184MFE0U	
63	2,700	35 × 50	0.20	2.30	EKMH630LGB272MA50U
	3,300	35 × 50	0.20	2.50	EKMH630LGB332MA50U
	3,900	35 × 50	0.20	2.80	EKMH630LGB392MA50U
	4,700	35 × 50	0.20	3.10	EKMH630LGB472MA50U
	5,600	35 × 60	0.20	3.50	EKMH630LGB562MA60U
	6,800	35 × 60	0.20	3.90	EKMH630LGB682MA60U
	8,200	35 × 80	0.20	4.70	EKMH630LGB822MA80U
	10,000	35 × 80	0.25	4.70	EKMH630LGB103MA80U
	12,000	35 × 100	0.25	5.50	EKMH630LGB123MAA0U
	15,000	35 × 120	0.25	6.60	EKMH630LGB153MAC0U
	18,000	50 × 80	0.25	7.40	EKMH630LGC183MC80U
	22,000	50 × 100	0.25	9.00	EKMH630LGC223MCA0U
	27,000	50 × 120	0.25	10.9	EKMH630LGC273MCC0U
	33,000	50 × 120	0.25	12.0	EKMH630LGC333MCC0U
	39,000	63.5 × 100	0.30	12.5	EKMH630LGC393MDA0U
	47,000	63.5 × 120	0.30	14.9	EKMH630LGC473MDC0U
	56,000	63.5 × 120	0.30	16.3	EKMH630LGC563MDC0U
	68,000	76.2 × 120	0.35	18.4	EKMH630LGC683MEC0U
82,000	76.2 × 140	0.40	20.0	EKMH630LGC823MEE0U	
100,000	76.2 × 140	0.50	20.0	EKMH630LGC104MEE0U	
120,000	89 × 140	0.60	21.8	EKMH630LGC124MFE0U	
80	2,200	35 × 50	0.15	2.40	EKMH800LGB222MA50U
	2,700	35 × 50	0.15	2.70	EKMH800LGB272MA50U
	3,300	35 × 50	0.15	3.00	EKMH800LGB332MA50U
	3,900	35 × 60	0.15	3.40	EKMH800LGB392MA60U
	4,700	35 × 60	0.15	3.70	EKMH800LGB472MA60U
	5,600	35 × 80	0.15	4.50	EKMH800LGB562MA80U
	6,800	35 × 80	0.15	4.90	EKMH800LGB682MA80U
	8,200	35 × 100	0.20	5.10	EKMH800LGB822MAA0U
	10,000	35 × 120	0.20	6.10	EKMH800LGB103MAC0U
	12,000	50 × 80	0.20	6.70	EKMH800LGC123MC80U
15,000	50 × 100	0.20	8.30	EKMH800LGC153MCA0U	
18,000	50 × 120	0.20	9.90	EKMH800LGC183MCC0U	
22,000	50 × 120	0.20	11.0	EKMH800LGC223MCC0U	
27,000	63.5 × 100	0.25	11.4	EKMH800LGC273MDA0U	
33,000	76.2 × 100	0.25	13.9	EKMH800LGC333MEA0U	
39,000	76.2 × 100	0.30	13.9	EKMH800LGC393MEA0U	

Return Group Chart



LARGE CAPACITANCE ALUMINUM ELECTROLYTIC CAPACITORS Standard screw terminals, 105°C

KMH Series

◆ STANDARD RATINGS

WV (V _{dc})	Cap (μF)	Case size ϕD×L(mm)	tan δ	Rated ripple current (Arms/105°C, 120Hz)	Part No.
80	47,000	76.2 × 120	0.30	16.5	EKMH800LGC473MEC0U
	56,000	76.2 × 120	0.30	18.1	EKMH800LGC563MEC0U
	68,000	76.2 × 140	0.35	19.7	EKMH800LGC683MEE0U
	82,000	89 × 140	0.40	22.1	EKMH800LGC823MFE0U
100	1,800	35 × 50	0.10	2.70	EKMH101LGB182MA50U
	2,200	35 × 50	0.10	3.00	EKMH101LGB222MA50U
	2,700	35 × 60	0.10	3.50	EKMH101LGB272MA60U
	3,300	35 × 80	0.10	4.20	EKMH101LGB332MA80U
	3,900	35 × 80	0.12	4.20	EKMH101LGB392MA80U
	4,700	35 × 100	0.12	5.00	EKMH101LGB472MAA0U
	5,600	35 × 100	0.12	5.40	EKMH101LGB562MAA0U
	6,800	35 × 120	0.15	5.80	EKMH101LGB682MAC0U
	8,200	50 × 80	0.15	6.40	EKMH101LGC822MCC0U
	10,000	50 × 100	0.15	7.80	EKMH101LGC103MCA0U
	12,000	50 × 120	0.15	9.30	EKMH101LGC123MCC0U
	15,000	50 × 120	0.15	10.4	EKMH101LGC153MCC0U
	18,000	63.5 × 100	0.20	10.4	EKMH101LGC183MDA0U
	22,000	63.5 × 120	0.20	12.5	EKMH101LGC223MDC0U
	27,000	76.2 × 120	0.25	13.7	EKMH101LGC273MEC0U
	33,000	76.2 × 120	0.25	15.2	EKMH101LGC333MEC0U
39,000	76.2 × 140	0.30	16.1	EKMH101LGC393MEE0U	
47,000	89 × 140	0.30	19.3	EKMH101LGC473MFE0U	
56,000	89 × 140	0.30	21.1	EKMH101LGC563MFE0U	
160	560	35 × 50	0.15	1.20	EKMH161LGB561MA50U
	680	35 × 50	0.15	1.30	EKMH161LGB681MA50U
	820	35 × 50	0.15	1.40	EKMH161LGB821MA50U
	1,000	35 × 50	0.15	1.60	EKMH161LGB102MA50U
	1,200	35 × 60	0.15	1.90	EKMH161LGB122MA60U
	1,500	35 × 60	0.15	2.10	EKMH161LGB152MA60U
	1,800	35 × 80	0.15	2.50	EKMH161LGB182MA80U
	2,200	35 × 80	0.15	2.80	EKMH161LGB222MA80U
	2,700	35 × 100	0.15	3.30	EKMH161LGB272MAA0U
	3,300	35 × 120	0.15	3.80	EKMH161LGB332MAC0U
	3,900	50 × 80	0.20	3.80	EKMH161LGC392MCC0U
	4,700	50 × 100	0.20	4.60	EKMH161LGC472MCA0U
	5,600	50 × 100	0.20	5.10	EKMH161LGC562MCA0U
	6,800	50 × 120	0.20	6.10	EKMH161LGC682MCC0U
	8,200	63.5 × 100	0.20	7.00	EKMH161LGC822MDA0U
	10,000	63.5 × 120	0.20	8.40	EKMH161LGC103MDC0U
12,000	76.2 × 100	0.20	9.40	EKMH161LGC123MEA0U	
15,000	76.2 × 120	0.20	11.4	EKMH161LGC153MEC0U	
18,000	76.2 × 140	0.20	13.4	EKMH161LGC183MEE0U	
22,000	89 × 140	0.25	14.5	EKMH161LGC223MFE0U	
27,000	89 × 140	0.25	16.0	EKMH161LGC273MFE0U	
200	330	35 × 50	0.15	0.90	EKMH201LGB331MA50U
	390	35 × 50	0.15	1.00	EKMH201LGB391MA50U
	470	35 × 50	0.15	1.10	EKMH201LGB471MA50U
	560	35 × 50	0.15	1.20	EKMH201LGB561MA50U
	680	35 × 50	0.15	1.30	EKMH201LGB681MA50U
	820	35 × 50	0.15	1.40	EKMH201LGB821MA50U
	1,000	35 × 60	0.15	1.70	EKMH201LGB102MA60U
	1,200	35 × 60	0.15	1.90	EKMH201LGB122MA60U
	1,500	35 × 80	0.15	2.30	EKMH201LGB152MA80U
	1,800	35 × 80	0.15	2.50	EKMH201LGB182MA80U
	2,200	35 × 100	0.15	3.00	EKMH201LGB222MAA0U
	2,700	35 × 120	0.15	3.60	EKMH201LGB272MCA0U
	3,300	50 × 80	0.15	4.10	EKMH201LGC332MCC0U
	3,900	50 × 100	0.15	4.90	EKMH201LGC392MCA0U
	4,700	63.5 × 100	0.20	5.30	EKMH201LGC472MDA0U
	5,600	63.5 × 100	0.20	5.80	EKMH201LGC562MDA0U
6,800	63.5 × 120	0.20	6.90	EKMH201LGC682MDC0U	
8,200	63.5 × 120	0.20	7.60	EKMH201LGC822MDC0U	
10,000	76.2 × 120	0.20	9.30	EKMH201LGC103MEC0U	
12,000	76.2 × 120	0.20	10.2	EKMH201LGC123MCC0U	
15,000	76.2 × 140	0.20	12.2	EKMH201LGC153MEE0U	
18,000	89 × 140	0.25	13.1	EKMH201LGC183MFE0U	
250	270	35 × 50	0.15	0.80	EKMH251LGB271MA50U

WV (V _{dc})	Cap (μF)	Case size ϕD×L(mm)	tan δ	Rated ripple current (Arms/105°C, 120Hz)	Part No.
250	330	35 × 50	0.15	0.90	EKMH251LGB331MA50U
	390	35 × 50	0.15	1.00	EKMH251LGB391MA50U
	470	35 × 50	0.15	1.10	EKMH251LGB471MA50U
	560	35 × 50	0.15	1.20	EKMH251LGB561MA50U
	680	35 × 60	0.15	1.40	EKMH251LGB681MA60U
	820	35 × 80	0.15	1.60	EKMH251LGB821MA80U
	1,000	35 × 80	0.20	1.60	EKMH251LGB102MA80U
	1,200	35 × 80	0.20	1.80	EKMH251LGB122MA80U
	1,500	35 × 100	0.20	2.10	EKMH251LGB152MAA0U
	1,800	35 × 120	0.20	2.50	EKMH251LGB182MAC0U
	2,200	50 × 80	0.20	2.90	EKMH251LGC222MCC0U
	2,700	50 × 100	0.20	3.50	EKMH251LGC272MCA0U
	3,300	50 × 120	0.20	4.20	EKMH251LGC332MCC0U
	3,900	50 × 120	0.20	4.60	EKMH251LGC392MCC0U
	4,700	63.5 × 120	0.20	5.70	EKMH251LGC472MDC0U
	5,600	63.5 × 120	0.20	6.30	EKMH251LGC562MDC0U
6,800	76.2 × 120	0.20	7.70	EKMH251LGC682MEC0U	
8,200	76.2 × 120	0.20	8.40	EKMH251LGC822MEC0U	
10,000	76.2 × 140	0.20	10.0	EKMH251LGC103MEE0U	
12,000	89 × 140	0.20	11.9	EKMH251LGC123MFE0U	
315	180	35 × 50	0.10	0.80	EKMH3B1LGB181MA50U
	220	35 × 50	0.10	0.90	EKMH3B1LGB221MA50U
	270	35 × 50	0.10	1.00	EKMH3B1LGB271MA50U
	330	35 × 50	0.10	1.10	EKMH3B1LGB331MA50U
	390	35 × 50	0.10	1.20	EKMH3B1LGB391MA50U
	470	35 × 60	0.10	1.40	EKMH3B1LGB471MA60U
	560	35 × 60	0.10	1.50	EKMH3B1LGB561MA60U
	680	35 × 80	0.10	1.70	EKMH3B1LGB681MA80U
	820	35 × 80	0.15	1.70	EKMH3B1LGB821MA80U
	1,000	35 × 100	0.15	2.00	EKMH3B1LGB102MAA0U
	1,200	35 × 120	0.15	2.40	EKMH3B1LGB122MAC0U
	1,500	50 × 80	0.15	2.70	EKMH3B1LGC152MCC0U
	1,800	50 × 100	0.15	3.30	EKMH3B1LGC182MCA0U
	2,200	50 × 120	0.15	4.00	EKMH3B1LGC222MCC0U
	2,700	50 × 120	0.15	4.40	EKMH3B1LGC272MCC0U
	3,300	63.5 × 100	0.15	5.10	EKMH3B1LGC332MDA0U
3,900	63.5 × 120	0.15	6.00	EKMH3B1LGC392MDC0U	
4,700	76.2 × 100	0.15	6.80	EKMH3B1LGC472MEA0U	
5,600	76.2 × 120	0.15	8.00	EKMH3B1LGC562MEC0U	
6,800	76.2 × 130	0.15	9.20	EKMH3B1LGC682MED0U	
8,200	89 × 140	0.15	11.4	EKMH3B1LGC822MFE0U	
10,000	89 × 140	0.15	12.6	EKMH3B1LGC103MFE0U	
350	180	35 × 50	0.10	0.80	EKMH351LGB181MA50U
	220	35 × 50	0.10	0.90	EKMH351LGB221MA50U
	270	35 × 50	0.10	1.00	EKMH351LGB271MA50U
	330	35 × 50	0.10	1.10	EKMH351LGB331MA50U
	390	35 × 60	0.10	1.30	EKMH351LGB391MA60U
	470	35 × 60	0.10	1.40	EKMH351LGB471MA60U
	560	35 × 80	0.10	1.60	EKMH351LGB561MA80U
	680	35 × 80	0.15	1.60	EKMH351LGB681MA80U
	820	35 × 100	0.15	1.80	EKMH351LGB821MAA0U
	1,000	35 × 120	0.15	2.20	EKMH351LGB102MAC0U
	1,200	50 × 80	0.15	2.40	EKMH351LGC122MCC0U
	1,500	50 × 100	0.15	3.00	EKMH351LGC152MCA0U
	1,800	50 × 120	0.15	3.60	EKMH351LGC182MCC0U
	2,200	50 × 120	0.15	4.00	EKMH351LGC222MCC0U
	2,700	63.5 × 100	0.15	4.60	EKMH351LGC272MDA0U
	3,900	76.2 × 120	0.15	6.70	EKMH351LGC392MEC0U
5,600	76.2 × 130	0.15	8.30	EKMH351LGC562MED0U	
6,800	76.2 × 140	0.15	9.50	EKMH351LGC682MEE0U	
8,200	89 × 140	0.15	11.4	EKMH351LGC822MFE0U	
400	180	35 × 50	0.10	0.80	EKMH401LGB181MA50U
	220	35 × 50	0.10	0.90	EKMH401LGB221MA50U
	270	35 × 50	0.10	1.00	EKMH401LGB271MA50U
	330	35 × 60	0.10	1.20	EKMH401LGB331MA60U
	390	35 × 60	0.10	1.30	EKMH401LGB391MA60U
470	35 × 80	0.10	1.40	EKMH401LGB471MA80U	

Return Group Chart



LARGE CAPACITANCE ALUMINUM ELECTROLYTIC CAPACITORS Standard screw terminals, 105°C

KMH Series

◆STANDARD RATINGS

WV (V _{dc})	Cap (μF)	Case size φD×L(mm)	tan δ	Rated ripple current (Arms/105°C, 120Hz)	Part No.
400	560	35 × 80	0.15	1.40	EKMH401LGB561MA80U
	680	35 × 100	0.15	1.70	EKMH401LGB681MAA0U
	820	35 × 120	0.15	2.00	EKMH401LGB821MAC0U
	1,000	50 × 80	0.15	2.20	EKMH401LGC102MC80U
	1,200	50 × 100	0.15	2.70	EKMH401LGC122MCA0U
	1,500	50 × 120	0.15	3.30	EKMH401LGC152MCC0U

WV (V _{dc})	Cap (μF)	Case size φD×L(mm)	tan δ	Rated ripple current (Arms/105°C, 120Hz)	Part No.
400	2,200	63.5 × 100	0.15	4.20	EKMH401LGC222MDA0U
	3,300	63.5 × 120	0.15	5.50	EKMH401LGC332MDC0U
	4,700	76.2 × 130	0.15	7.60	EKMH401LGC472MED0U
	5,600	89 × 140	0.15	9.40	EKMH401LGC562MFE0U
	6,800	89 × 140	0.15	10.4	EKMH401LGC682MFE0U

◆RATED RIPPLE CURRENT MULTIPLIERS

●Frequency Multipliers

Rated voltage (V _{dc})	Case diameter (mm)	Frequency (Hz)					
		50	120	300	1k	10k	50k
10 to 50	φ35 to φ89	0.95	1.00	1.03	1.05	1.09	1.12
63 & 80	φ35	0.90	1.00	1.06	1.10	1.18	1.22
	φ50 to φ89	0.95	1.00	1.03	1.05	1.09	1.12
100	φ35	0.82	1.00	1.12	1.22	1.30	1.33
	φ50	0.90	1.00	1.06	1.10	1.18	1.22
	φ63.5 to φ89	0.95	1.00	1.03	1.05	1.09	1.12
160 to 250	φ35	0.80	1.00	1.19	1.34	1.46	1.52
	φ50 & φ63.5	0.81	1.00	1.14	1.26	1.36	1.41
	φ76.2 & φ89	0.82	1.00	1.12	1.22	1.30	1.33
315 to 400	φ35 to φ89	0.80	1.00	1.19	1.34	1.46	1.52

The endurance of capacitors is reduced with internal heating produced by ripple current at the rate of halving the lifetime with every 5°C rise. When long life performance is required in actual use, the rms ripple current has to be reduced.