

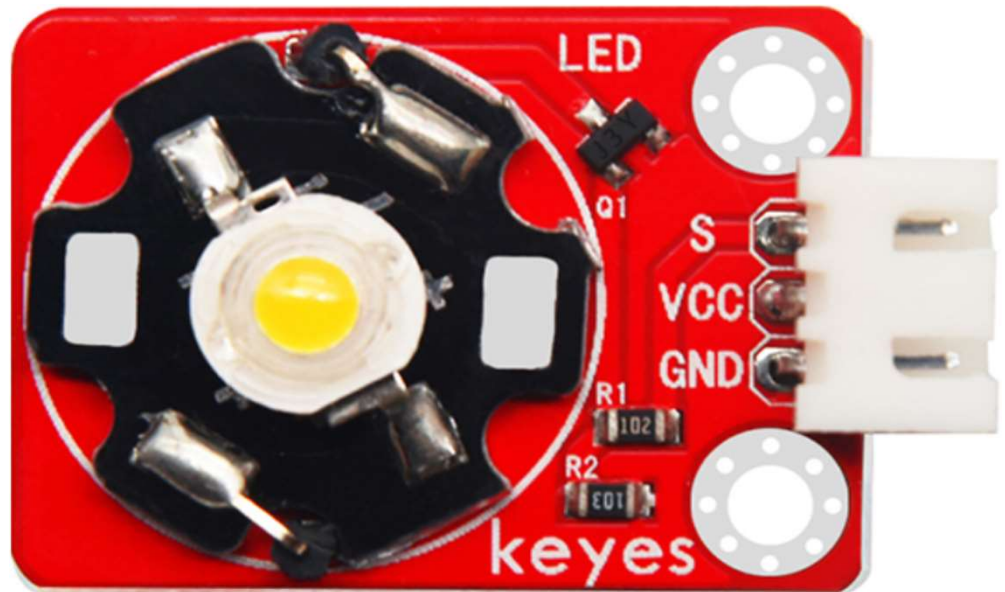
## KE2014 KEYES 3W LED module

### Parameters:

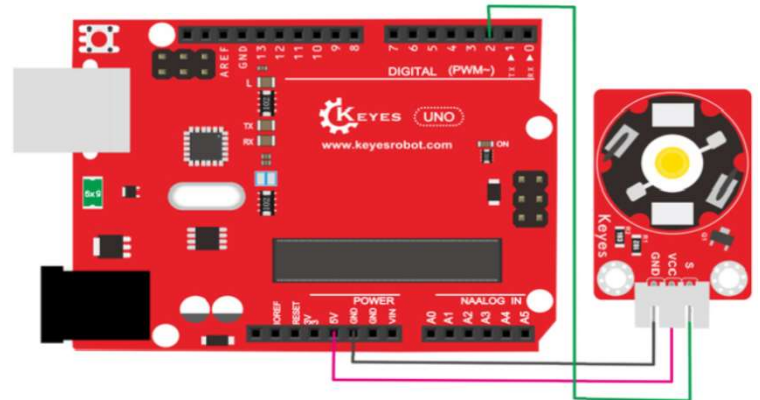
Working Voltage: 3.3 ~ 5VDC

Colour: Red

Size: 34x22x12mm.



### PINOUT Instruction:



### Test code:

```
int LEDpin = 2; //select the pin for the White LED
int val;
void setup() {
  pinMode(LEDpin, OUTPUT);
}
void loop()
{for(val=255; val>0; val--)
  {analogWrite(LEDpin, val);
  delay(5);
  }
for(val=0; val<255; val++)
  {analogWrite(LEDpin, val);
  delay(5);
  }
}
```

### Result:

Done uploading the code, you should see the LED fade ON and OFF.