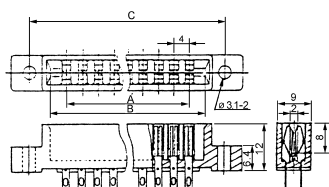
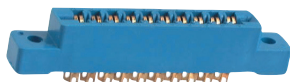


- \* Current rating : 3 AMP
- \* Contact resistance : less than 10 mΩ
- \* Contact material : phosphor bronze
- \* Housing material : blue or black glass fiber polyester classification of UL 94V-0
- \* Insulation resistance : more than 1000 MΩ at 500V DC
- \* Operation temperature : -55°C to + 120°C
- \* Operating relative humidity: 5 to 95% R.H.
- \* Accepts double P.C. board from 1.37mm to 1.9mm

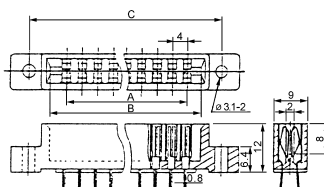
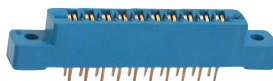


## 3.96mm EDGE connector

Solder type YNSxx



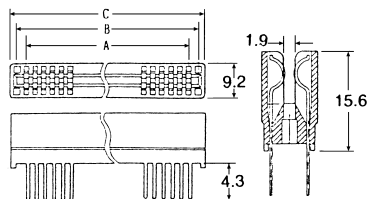
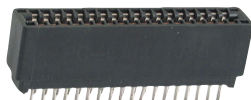
DIP straight type YNNxx



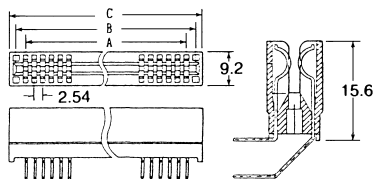
Pins	Part No.		Dimension (mm)		
			A	B	C
6*2 / 12	YNS12	YNN12	19.8	28.2	38.8
10*2 / 20	YNS20	YNN20	35.64	44.0	54.7
12*2 / 24	YNS24	YNN24	43.56	52.0	62.7
15*2 / 30	YNS30	YNN30	55.44	63.8	74.5
18*2 / 36	YNS36	YNN36	67.32	75.7	86.4
22*2 / 44	YNS44	YNN44	83.16	91.6	102.3
28*2 / 56	YNS56	YNN56	106.92	115.3	126.0
30*2 / 60	YNS60	YNN60	114.84	123.2	133.9
36*2 / 72	YNS72	YNN72	138.60	147.0	157.8
43*2 / 86	YNS86	YNN86	166.32	174.72	185.42

## 2.54mm EDGE connector

DIP straight type YNWxx



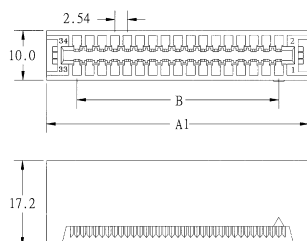
DIP right angle type YNTxx



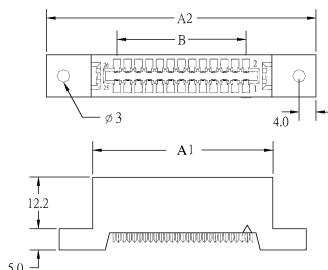
Pins	Part No.		Dimension (mm)		
			A	B	C
10*2 / 20	YNW20	YNT20	22.86	28.16	32.08
15*2 / 30	YNW30	YNT30	35.56	40.86	44.78
17*2 / 34	YNW34	YNT34	40.64	45.94	49.86
18*2 / 36	YNW36	YNT36	43.18	48.48	52.40
20*2 / 40	YNW40	YNT40	48.26	53.56	57.50
22*2 / 44	YNW44	YNT44	53.34	58.64	62.50
25*2 / 50	YNW50	YNT50	60.96	66.26	66.20
30*2 / 60	YNW60	YNT60	73.66	78.96	82.88
31*2 / 62	YNW62	YNT62	76.20	81.50	85.40
32*2 / 64	YNW64	YNT64	78.74	84.04	87.96
36*2 / 72	YNW72	YNT72	88.90	94.20	98.12
43*2 / 86	YNW86	YNT86	106.68	111.98	115.90
49*2 / 98	YNW98	YNT98	121.92	127.22	131.14
50*2 / 100	YNW100	YNT100	124.46	129.76	133.68

## 2.54mm EDGE connector

IDC type YNTAxx



IDC type W/ear YNTBxx



Pins	Part No.		Dimension (mm)		
			A1	A2	B
10	YNTA10	YNTB10	22.36	43.06	10.16
14	YNTA14	YNTB14	27.44	48.14	15.24
16	YNTA16	YNTB16	29.98	50.68	17.78
20	YNTA20	YNTB20	35.06	55.76	22.86
26	YNTA26	YNTB26	42.68	63.38	30.48
34	YNTA34	YNTB34	52.84	73.54	40.64
40	YNTA40	YNTB40	60.46	81.16	48.26
50	YNTA50	YNTB50	73.16	93.86	60.96
60	YNTA60	YNTB60	85.86	106.56	73.66
62	YNTA62	YNTB62	88.40	109.10	76.20
64	YNTA64	YNTB64	90.94	111.64	78.74