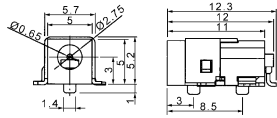
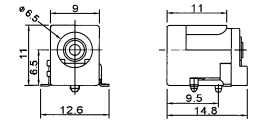


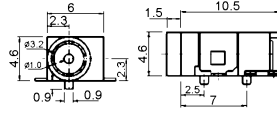
**K372000**  
0.65mm DC power jack (SMD)



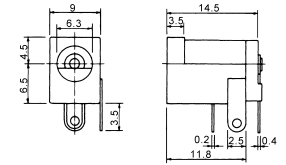
**K374G /H**  
DC power jack (SMD)  
A: central pin 2mm  
B: central pin 2.5mm



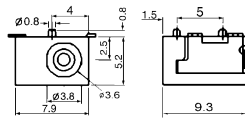
**K372010**  
1.0mm DC power jack (SMD)



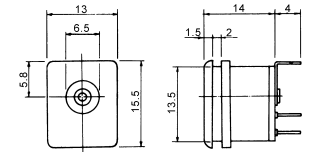
**K375A /B**  
DC power jack  
A: central pin 2mm  
B: central pin 2.5mm



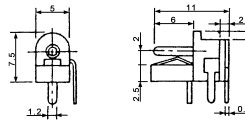
**K372050**  
DC power jack (SMD)  
A: central pin 1.0mm  
B: central pin 1.3mm



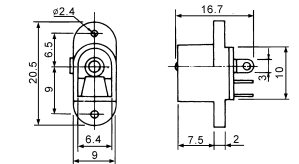
**K375E /F**  
DC power jack  
E: central pin 2mm  
F: central pin 2.5mm



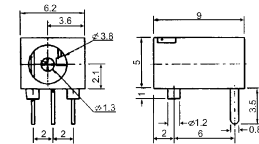
**K37211**  
1.3mm DC power jack



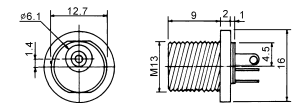
**K375G /H**  
DC power jack  
G: central pin 2mm  
H: central pin 2.5mm



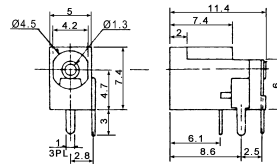
**K37212**  
1.3mm DC power jack



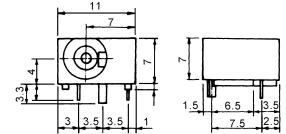
**K375J /K**  
DC power jack  
J: central pin 2mm  
K: central pin 2.5mm



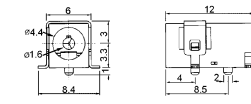
**K37214**  
1.3mm DC power jack



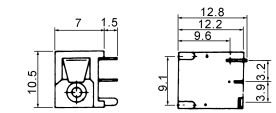
**K375L /M**  
DC power jack  
L: central pin 2mm  
M: central pin 2.5mm



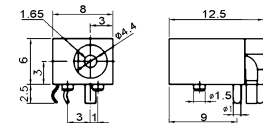
**K37220**  
1.6mm DC power jack



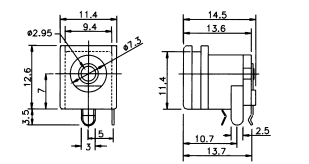
**K375N /P**  
DC power jack  
N: central pin 2mm  
P: central pin 2.5mm



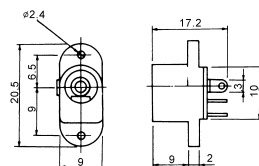
**K37221**  
1.65mm DC power jack



**K375X**  
DC power jack  
X: central pin 2.95mm



**K374A /B**  
DC power jack  
A: central pin 2mm  
B: central pin 2.5mm



**K375Z**  
DC power jack  
Z: central hole 1.0mm  
(for K36750)

