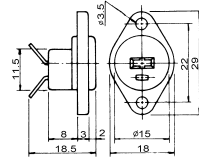
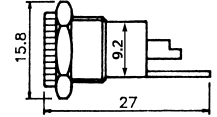
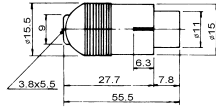
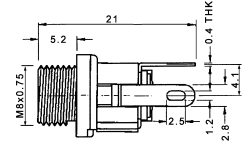
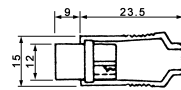
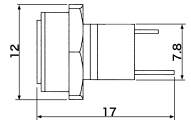
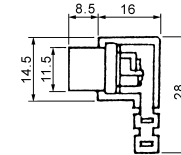
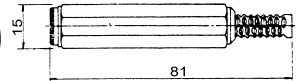
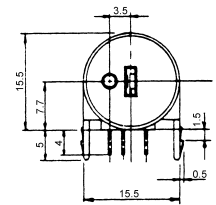
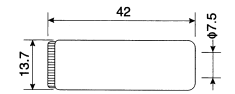
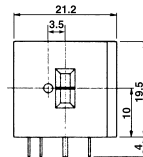
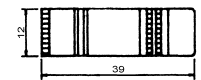
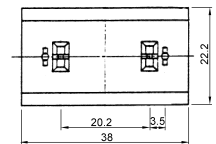
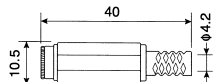
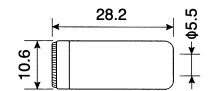


**K367**  
 2P din jack-panel mount

**K36720A /B**  
 DC power jack  
 A: pin 2mm  
 B: pin 2.5mm

**K36711**  
 2P din inline socket

**K36721A /B**  
 DC power jack  
 A: pin 2mm  
 B: pin 2.5mm

**K36712**  
 2P din inline socket  
 (screw type)

**K36721C /D**  
 DC power jack  
 C: pin 2mm  
 D: pin 2.5mm

**K36713**  
 Right angle 2P din jack  
 (screw type)

**K36722A /B**  
 DC power jack  
 A: pin 2mm  
 B: pin 2.5mm

**K36714**  
 2P din jack

**K36722C /D**  
 DC power jack  
 C: pin 2mm  
 D: pin 2.5mm

**K36715**  
 2P din jack panel mount

**K36723A /B**  
 DC power jack  
 A: pin 2mm  
 B: pin 2.5mm

**K36716**  
 2P din jack panel mount

**K36724A /B**  
 DC power jack  
 A: pin 2mm  
 B: pin 2.5mm

**K36724C /D**  
 DC power jack  
 C: pin 2mm  
 D: pin 2.5mm

**K36750**  
 DC plug 1.0 x 3.3 (L9.5)  
 (for **K375Z**)
