

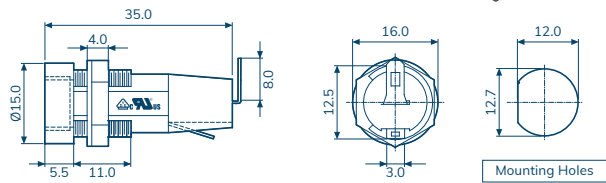
Conquer fuse holders feature for easy removal, clearly printed/imprinted “fuse” designation for easy panel identification and keyed mounting hole requirement for anti-rotation safety. All fuse holders include mounting washer and solder lugs for wiring.

- Insulating body : flame retarding UL 94 V0 thermoplastic material.
- Contact : Nickel or Tin plated copper alloy.

CQ-206S

RoHS

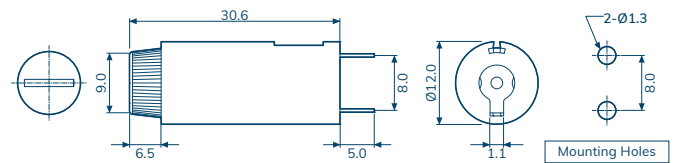
For 5x20mm Fuse



CQ-206C

RoHS

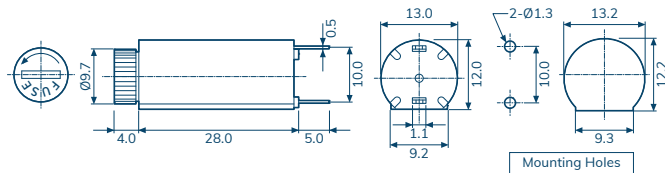
For 5x20mm Fuse



CQ-206CV

RoHS

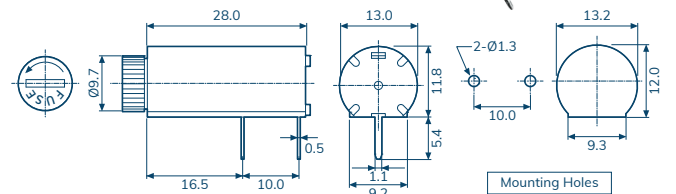
For 5x20mm Fuse



CQ-206CH

RoHS

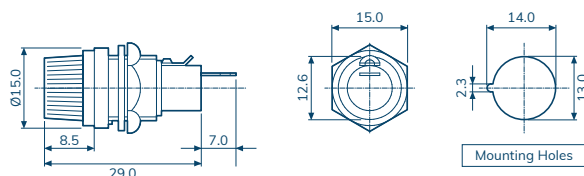
For 5x20mm Fuse



CQ-206HU

RoHS

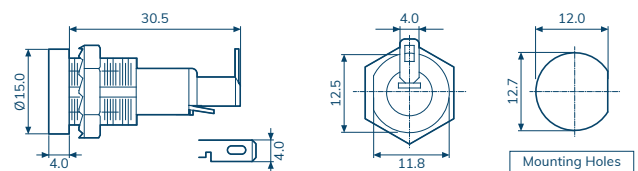
For 5x20mm Fuse



CQ-206D

RoHS

For 5x20mm Fuse

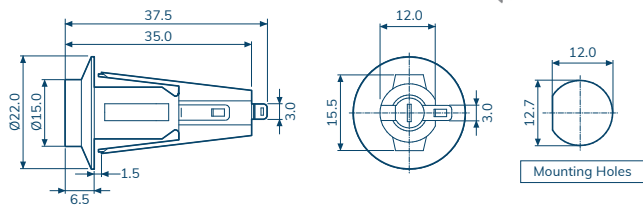


Item Number	CQ-206S	CQ-206C	CQ-206CV	CQ-206CH	CQ-206HU	CQ-206D
Rated Current	10A / 250V	10A / 250V	10A / 250V	10A / 250V	10A / 250V	10A / 250V
Insulation Resistance At 500 VDC	100MΩ Min	100MΩ Min	100MΩ Min	100MΩ Min	100MΩ Min	100MΩ Min
Contact Resistance	5mΩ At 1A DC	5mΩ At 1A DC	5mΩ At 1A DC	5mΩ At 1A DC	5mΩ At 1A DC	5mΩ At 1A DC
Dielectric Strength For 60 Sec	AC1500V Min.	AC1000V Min.	AC1500V Min.	AC1500V Min.	AC2000V Min.	AC1500V Min.
Screw Driver Knob Approval						

CQ-206F

RoHS

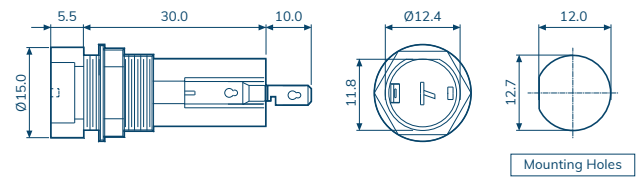
For 5x20mm Fuse



CQ-206M

RoHS

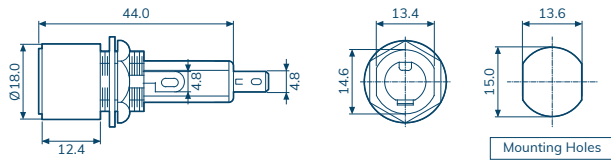
For 5x20mm Fuse



CQ-207A

RoHS

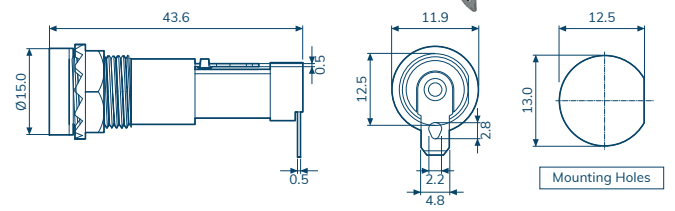
For 6.3x32mm Fuses



CQ-207D

RoHS

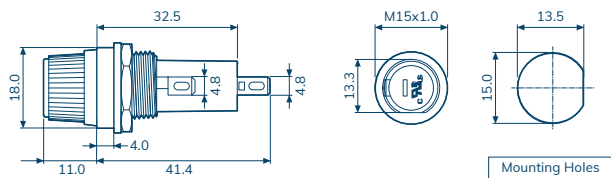
For 6.3x32mm Fuses



CQ-207HU

RoHS

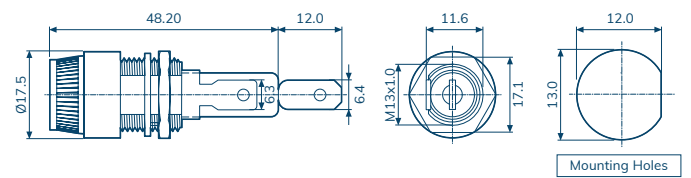
For 6.3x32mm Fuses



CQ-207TU

RoHS

For 6.3x32mm Fuses



Item Number	CQ-206F	CQ-206M	CQ-207A	CQ-207D	CQ-207HU	CQ-207TU
Rated Current	10A / 250V	10A / 250V	10A / 250V	15A / 250V	10A / 250V	10A / 250V
Insulation Resistance At 500 VDC	100MΩ Min	100MΩ Min	100MΩ Min	100MΩ Min	100MΩ Min	100MΩ Min
Contact Resistance	5mΩ At 1A DC	5mΩ At 1A DC	5mΩ At 1A DC	5mΩ At 1A DC	5mΩ At 1A DC	5mΩ At 1A DC
Dielectric Strength For 60 Sec	AC1500V Min.	AC1500V Min.	AC1500V Min.	AC1500V Min.	AC1500V Min.	AC1500V Min.
Screw Driver Knob Approval						

