

Specification Guide Codes:

A = Item Number

B = Rated Current

C = Insulation Resistance At 500 V DC

D = Contact Resistance

E = Dielectric Strength For 60 Seconds

• **Insulating Body** : Flame Retarding UL 94 V0 Thermoplastic Material.

• **Contact** : Nickel or Tin Plated Copper Alloy.

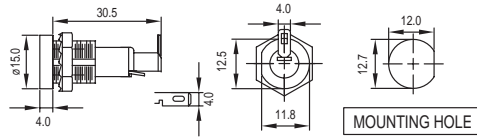
PANEL MOUNT FUSE HOLDER FOR 5x20mm FUSES

CQ-206D

RoHS

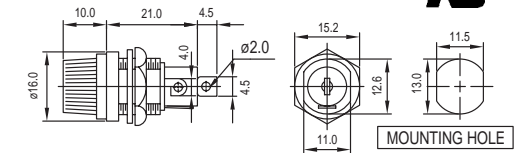


B: 10A 250V.
C: 100MΩ Min
D: 5mΩ At 1A DC
E: AC1500V Min.
Bayonet Knob
Approvals:



CQ-206H

B: 10A 250V.
C: 100MΩ Min
D: 5mΩ At 1A DC
E: AC1500V Min.
Screw Knob
Approvals:

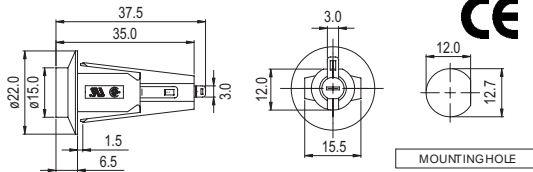


CQ-206F

RoHS



B: 6.3A 250V.
C: 100MΩ Min
D: 5mΩ At 1A DC
E: AC2000V Min.
Screw Knob
Approvals:

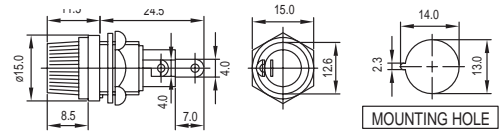


CQ-206HU

RoHS



B: 10A 250V.
C: 100MΩ Min
D: 5mΩ At 1A DC
E: AC2000V Min.
Screw Knob
Approvals:

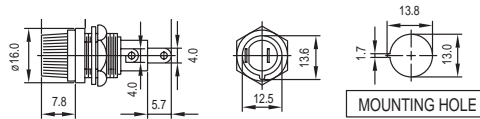


CQ-206HHC

RoHS



B: 10A 250V.
C: 100MΩ Min
D: 5mΩ At 1A DC
E: AC1500V Min.
Screw Knob

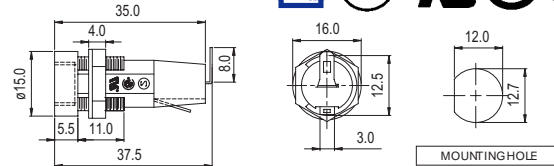


CQ-206S

RoHS



B: 6.3A 250V.
C: 100MΩ Min
D: 5mΩ At 1A DC
E: AC2000V Min.
Screw Knob
Approvals:



CQ-206M

RoHS



B: 10A 250V.
C: 100MΩ Min
D: 5mΩ At 1A DC
E: AC2000V Min.
Bayonet Knob
Approvals:

