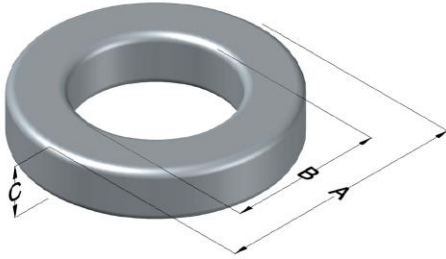




# C055180A2

110 Delta Drive  
 Pittsburgh, PA 15238  
 NAFTA Sales: (1)800-245-3984  
 HK Sales : (852)3102-9337  
 magnetics@spang.com  
 www.mag-inc.com



MPP Permeability ( $\mu$ )	$A_L$ (nH/T <sup>2</sup> )	Core Marking			Coating Color
		Lot Number	Part Number	Inductance Grade	
125	42 ± 8%	N/A	N/A	N/A	Gray

Dimensions	Uncoated		Coated Limits			Packaging
	(mm)	(in)	(mm)	(in)		
OD (A)	4.65	0.183	5.29	0.208	max	Bulk Pack 5 vials/box Box Qty= 5000 pcs
ID (B)	2.36	0.093	1.85	0.073	min	
HT (C)	2.54	0.100	3.18	0.125	max	

Electrical Characteristics			Physical Characteristics						
Watt Loss @ 100 kHz, 100mT max(mW/cm <sup>3</sup> )	DC Bias min (oersteds)		Voltage Breakdown wire to wire min (V <sub>AC</sub> )	Break Strength min (kg)	Window Area W <sub>A</sub> (mm <sup>2</sup> )	Cross Section A <sub>e</sub> (mm <sup>2</sup> )	Path Length L <sub>e</sub> (mm)	Volume V <sub>e</sub> (mm <sup>3</sup> )	Weight (g)
	80%	50%							
900	25.0	48.5	-*	3.6	2.69	2.85	10.6	30.3	0.25

Winding Information					Temperature Rating	
Winding Length Per Turn				Wound Coil Dimensions (mm)		Curie Temp: 460°C
Winding Factor	(mm)	Winding Factor	(mm)	40% Winding Factor	OD	5.56
					HT	3.73
0%	9.79	40%	10.7	Completely Full Window	Max OD	6.65
20%	10.3	45%	10.9		Max HT	4.94
25%	10.4	50%	11.0	Surface Area (mm <sup>2</sup> )		
30%	10.5	60%	11.3	Unwound Core	110	
35%	10.6	70%	11.6	40% Winding Factor	130	
Coating Temp (Continuous up to): 200°C						
Notes:						
MPP cores 4.65 mm and smaller are graded into 5% bands. *No voltage breakdown min for A2 or A7 with OD ≤4.65mm						

## Typical DC Bias Performance

