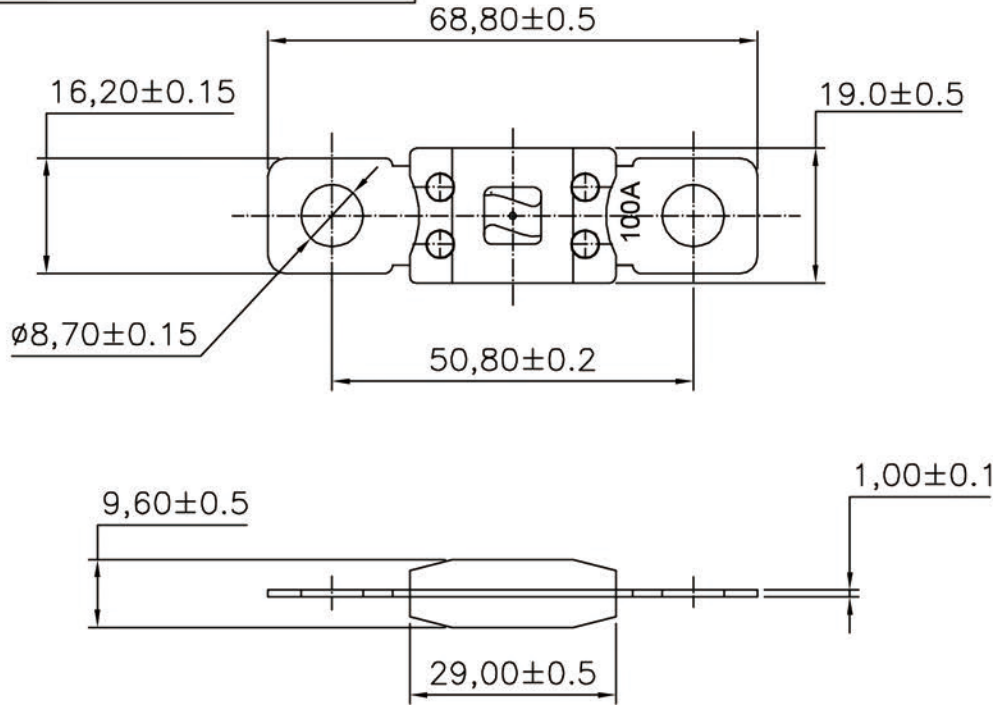


ALL INFORMATION CONTAINED OR DISCLOSED BY THIS DOCUMENT IS CONSIDERED CONFIDENTIAL AND PROPRIETARY BY ANDU ELECTRONICS CO.,LTD. ALL DESIGN, MANUFACTURING, USE, REPRODUCTION, AND ALL SALES RIGHTS, ARE EXPRESSLY RESERVED BY ANDU TO ANDU ELECTRONICS CO.,LTD. AND COMMUNICATION OF THIS INFORMATION TO OTHERS IS PROHIBITED WITHOUT THE PRIOR WRITTEN CONSENT OF Sellituse

DRAWING REVISIONS				
REV	S/N	DESCRIPTION	APPROVED	DATE
A	20080210-011	ORIGINAL RELEASE		



NOTES: UNLESS OTHERWISE SPECIFIED.

1. Interrupting Rating: 2000A@32VDC;
2. Voltage Rating: 32VDC;
3. Operating Temperature Range: -40°C ~ 125°C;
4. Terminals: Copper/Zn alloy.
5. Housing Material: PA66/PPA(33% or 35%GF);
6. Mounting torque: 12-18Nm W/M8;
7. Functional Characteristics

TESTING CURRENT	BLOW TIME LIMIT
100%	4Hr. minimum
135%	120seconds---1800seconds
200%	1seconds --- 15seconds
350%	0.3sec-5sec
600%	0.1sec-1sec

8. Standard: ISO8820-5/UL248 special purpose fuses;
9. "*" not mentioned in ISO standards;
10. "***" is only for short circuit protector;

14	32V	500A **	ANM-500A
13	32V	450A **	ANM-450A
12	32V	400A **	ANM-400A
11	32V	350A **	ANM-350A
10	32V	300A **	ANM-150A
9	32V	250A	ANM-250A
8	32V	200A	ANM-200A
7	32V	175A	ANM-175A
6	32V	150A	ANM-150A
5	32V	125A	ANM-125A
4	32V	100A	ANM-100A
3	32V	80A	ANM-80A
2	32V	60A *	ANM-60A
1	32V	40A *	ANM-40A
ITEM	Voltage rating	RATING	ASSEMBLY P/N

东莞市天瑞电子有限公司

UNLESS OTHERWISE STATED		Fasten Fuse			CUSTOMER	
WALL THICKNESS		FOR ANM				
LINEAR	.XX	± 0.15	MM	DSGN	Tommy Qiu	07-12-08
ANGULAR	.XXX	± 0.05	MM	SCALE	free	
DRAFT ANGLE/SIDE		± 0.5	DEG	DFTS	Tommy Qiu	07-12-08
BURR & FLASH		0.5	° MAX	SHEET	1 OF 1	
BREAK CORNERS		0.10	MAX	CHKD		
PARTING LINE MISMATCH		0.20	R.MAX	APPD		
		0.05	MAX	APPD		
				PART NO.	ANM	
				REV	A	