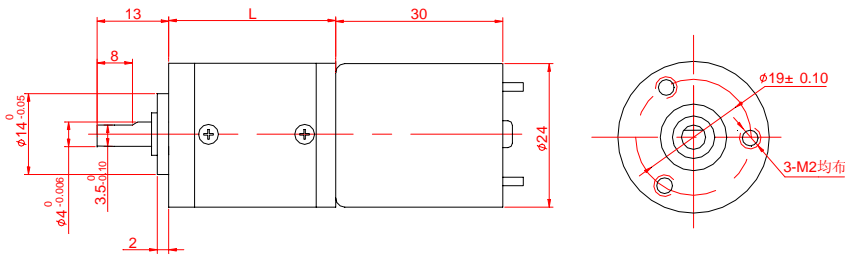


PM DC PLANETARY GEAR MOTOR

E15

24JX5K/2430

● 外形和安装尺寸 Dimensions



● 电动机主要技术参数 Motor Technical Data

电机型号 TYPE	额定电压 Rated voltage VDC	空载转速 No-load speed r/min	空载电流 No-load current mA	额定转速 Rated speed r/min	额定转矩 Rated torque g.cm	输出功率 Output power W	额定电流 Rated current mA	堵转力矩 Stall torque g.cm	堵转电流 Stall current A
2430-1230	12	3000	40	2400	20	0.5	90	100	0.3
2430-1245	12	4500	60	3600	25	0.9	170	125	0.5
2430-1260	12	6000	70	4800	30	1.5	240	150	1.0

● 齿轮减速电机主要技术参数 Gearmotor Technical Data

24JX5K/2430-1230

减速比	Reduction ratio	4	5	14	19	27	51	71	100	139	189	265	369	516	720
减速级数	Number of gear trains	2	2	3	3	3	4	4	4	4	5	5	5	5	5
减速器长度(L)	Length(L) mm	25	25	25	25	25	30	30	30	30	39	39	39	39	39
空载转速	No-load speed r/min	750	600	214	157	111	58	42	30	21	15	11	8	5	4
额定转速	Rated speed r/min	600	480	171	126	88	47	34	24	17	12	9	6	4	3.6
额定转矩	Rated torque kg.cm	0.07	0.09	0.2	0.3	0.4	0.6	0.9	1.3	1.8	2.1	2.9	4.0	5.0	5.0
最大瞬间允许负载 Max. permissible load in a short time	kg.cm	3	3	6	6	6	8	8	8	8	12	12	12	12	12
转 向	Direction of rotation	CCW	CCW	CW	CW	CW	CCW	CCW	CCW	CCW	CW	CW	CW	CW	CW

24JX5K/2430-1245

减速比	Reduction ratio	4	5	14	19	27	51	71	100	139	189	265	369	516	720
减速级数	Number of gear trains	2	2	3	3	3	4	4	4	4	5	5	5	5	5
减速器长度(L)	Length(L) mm	25	25	25	25	25	30	30	30	30	39	39	39	39	39
空载转速	No-load speed r/min	1125	900	321	236	166	88	63	45	32	23	17	12	8	6
额定转速	Rated speed r/min	900	720	257	189	133	70	50	36	26	19	13	10	7	5.6
额定转矩	Rated torque kg.cm	0.09	0.1	0.2	0.3	0.5	0.8	1.1	1.6	2.2	2.6	3.6	5.0	5.0	5.0
最大瞬间允许负载 Max. permissible load in a short time	kg.cm	3	3	6	6	6	8	8	8	8	12	12	12	12	12
转 向	Direction of rotation	CCW	CCW	CW	CW	CW	CCW	CCW	CCW	CCW	CW	CW	CW	CW	CW

24JX5K/2430-1260

减速比	Reduction ratio	4	5	14	19	27	51	71	100	139	189	265	369	516	720
减速级数	Number of gear trains	2	2	3	3	3	4	4	4	4	5	5	5	5	5
减速器长度(L)	Length(L) mm	25	25	25	25	25	30	30	30	30	39	39	39	39	39
空载转速	No-load speed r/min	1500	1200	428	315	222	117	84	60	43	31	22	16	11	8
额定转速	Rated speed r/min	1200	960	342	252	177	94	67	48	34	25	18	13	8	7
额定转矩	Rated torque kg.cm	0.1	0.1	0.3	0.4	0.6	1.0	1.3	1.9	2.7	3.1	4.3	5.0	5.0	5.0
最大瞬间允许负载 Max. permissible load in a short time	kg.cm	3	3	6	6	6	8	8	8	8	12	12	12	12	12
转 向	Direction of rotation	CCW	CCW	CW	CW	CW	CCW	CCW	CCW	CCW	CW	CW	CW	CW	CW